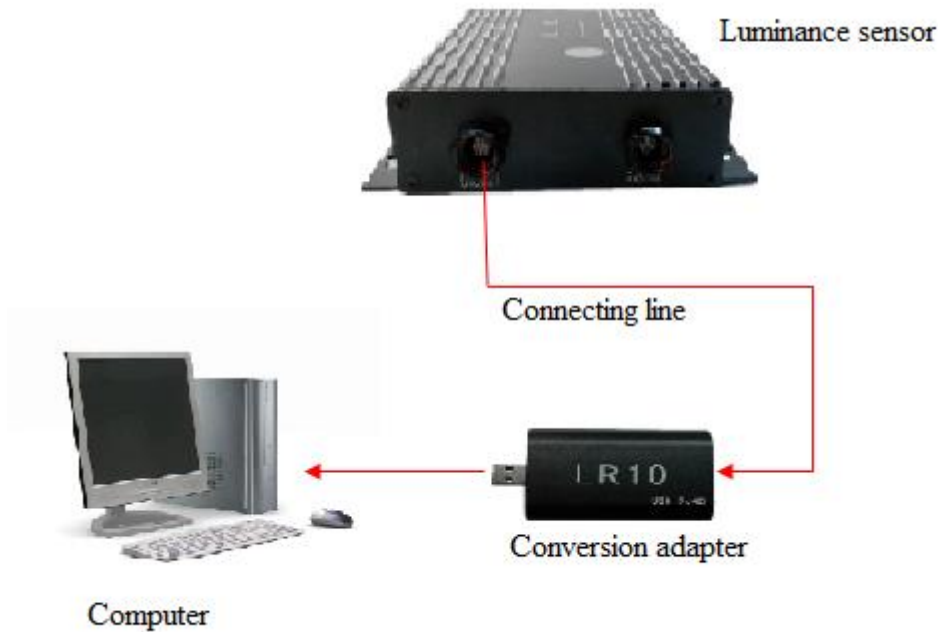


## CONTENTS

<b>1. System Connection Diagram</b> .....	1
<b>2. Software Setting</b> .....	1
2.1 Automatic Brightness Adjustment Interface Introduction .....	1
2.2 Automatic Brightness Adjustment Method.....	3
2.3 Detecting whether to start the automatic brightness adjustment settings .....	4

## 1. System Connection Diagram

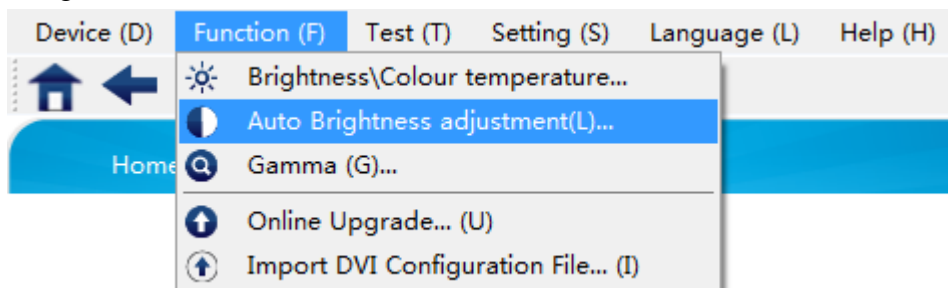


## 2. Software Setting

### 2.1 Automatic Brightness Adjustment Interface Introduction

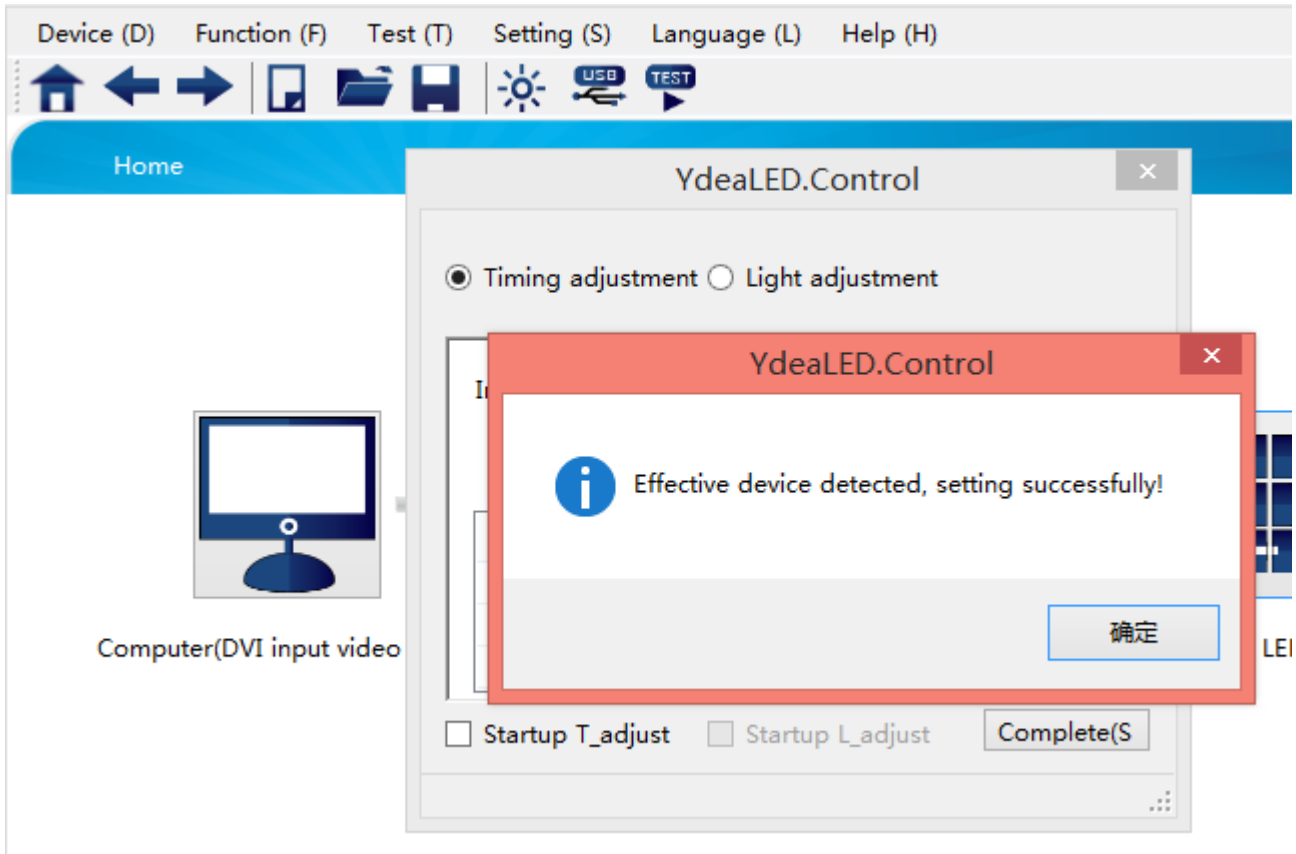
1) Enter the automatic brightness adjustment interface

Start the LED control software, click function options, select the automatic brightness adjustment, as shown in figure.

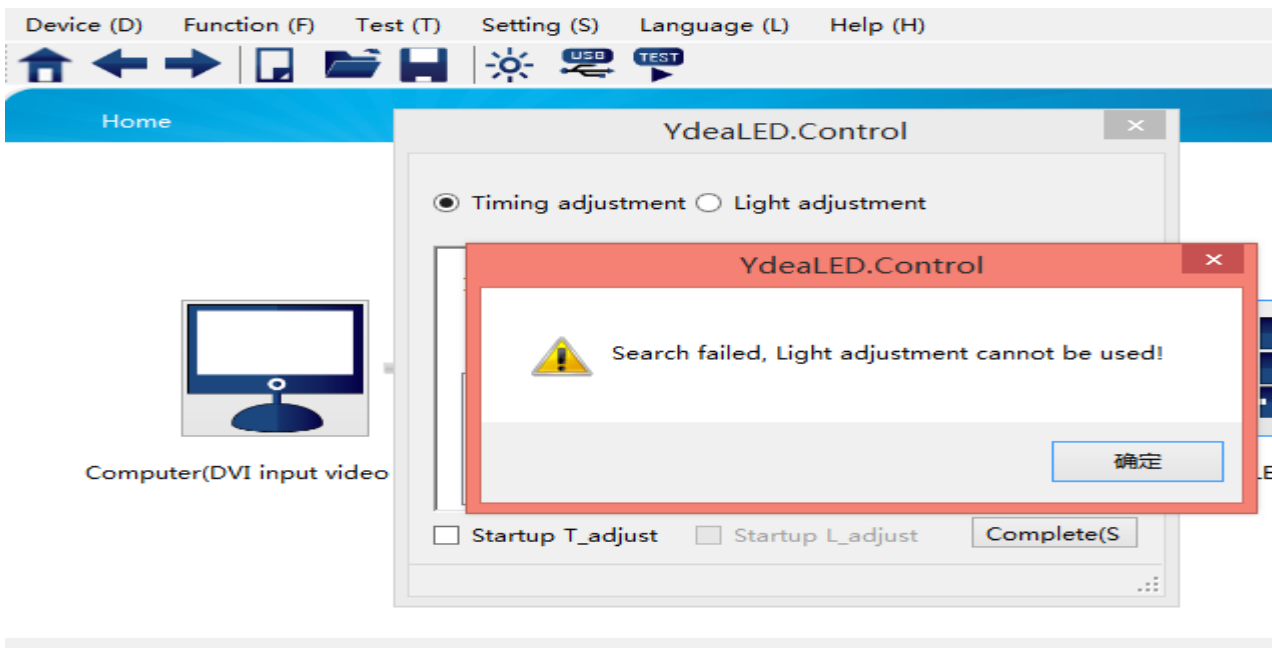


2) Interface description

Enter the automatic brightness adjustment interface, the system will automatically detect the luminance sensor.



If the luminance sensor is not connected, will see a pop-up window.



When luminance sensor is not connected, light adjustment is not available, use only the timing adjustment.

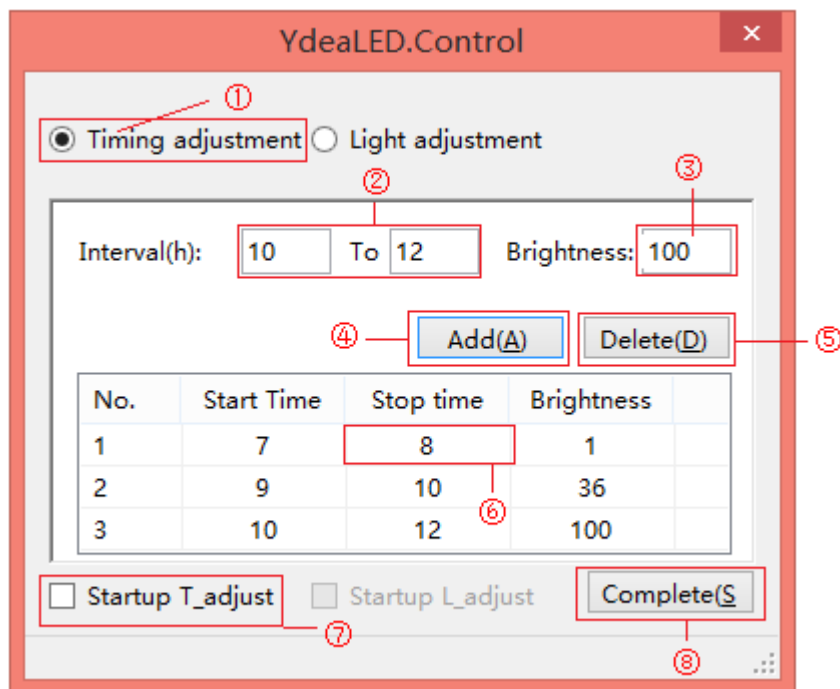
## 2.2 Automatic Brightness Adjustment Method

Auto brightness adjustment can be used in two ways, respectively is the timing adjustment and light adjustment.

### 1) Timing Adjustment

Function: in a period of time, the brightness of the system is set to a specific value.

Setup steps: as shown in figure.

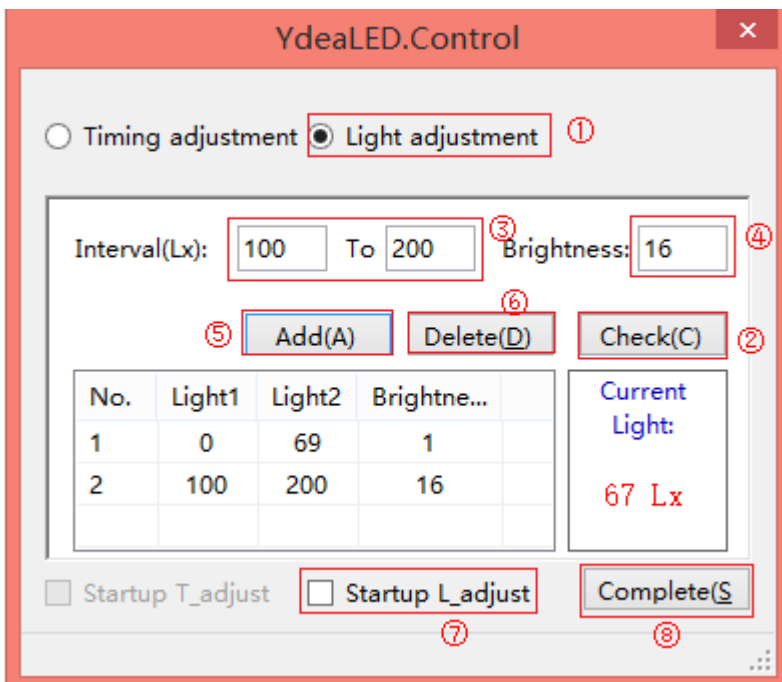


- ① Select timing adjustment;
- ② Set the time period;
- ③ Set brightness values in the time period;
- ④ The set value is added to the system, each point of time will add a setting value;
- ⑤ Delete the setting value;
- ⑥ Parameter tuning;
- ⑦ Start timing adjustment;
- ⑧ Complete setup.

### 2) Light adjustment

Function: In the illumination range, the screen brightness is adjusted to the specified value.

Setup steps: as shown in figure.



- ① Select light adjustment;
- ② Query brightness value;
- ③ Set the interval;
- ④ Set the brightness;
- ⑤ The set value is added to the system, each point of time will add a setting value;
- ⑥ Delete the setting value;
- ⑦ Parameter tuning;
- ⑧ Start light adjustment;
- ⑨ Complete setup.

### 2.3 Detecting whether to start the automatic brightness adjustment settings

In the lower left corner of the brightness adjustment interface, can view the automatic brightness adjustment way, mainly in three cases: “Light adjustment has started”, “Timing adjustment has started”, “Automatic adjustment did not started”.as shown in figure

**YdeaLED.Control** [X]

**Settings screen brightness and color temperature body**

Brightness  256 Level  16 Level

65

Color temperature

Custom  2800 K  3200 K  4400 K  
 5000 K  5600 K  6000 K  6500 K  
 9300 K

RED 255  
GREEN 255  
BLUE 255

Automatic adjustment did not start... Save Send (S)