

Ydea-C5 System

Encrypting System User Manual

Catalogue

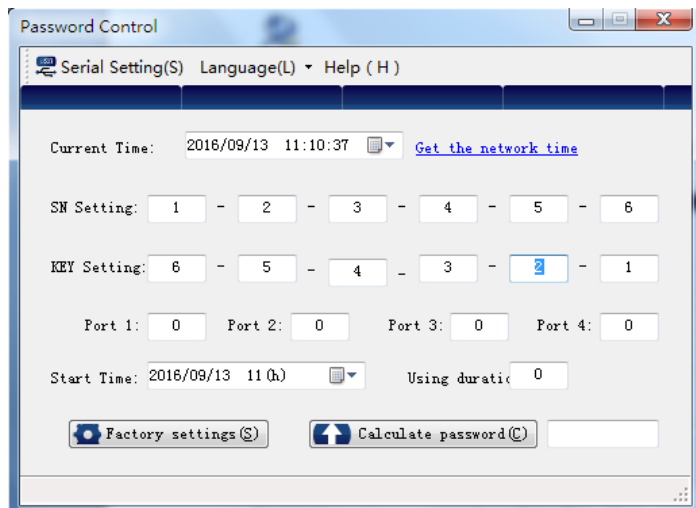
1. Password Control Software overview
2. Password Control instruction
3. YdeaFast instruction

1. Password Control Software overview

Turn on the LED display, then install encrypt system software-password control, after opening the software, enter the login password:666



Main interface of software shown as below:



Serial detecting : serial function detection, ensure the communication between computer and main controller;

Language:Chinese or English.

Help: check the software version, convenient for communication on after-sales service among manufacturer.

Current time: when connecting network, click "get the current network time" to keep the encrypt time and network time consistent.

SN setting, KEY setting, port 1,2,3,4 : basis of password calculation ; After encrypting starting, if modify starting time and use hours, it is valid on the condition that parameter of SN setting, KEY setting, port 1,2,3,4 need to set same as initial setting of encrypt system first time starting up;

Starting time : To set the starting time of encrypting

Operating hour : To set the time limit of encrypting system operating; LED display will turn off when encrypting expire , it recover after restarting whole LED display system or encrypting forbidden; "current time" plus "setting use hour" not accept to larger than the year of 2099 , if time is larger than maximum number, deal to the limit of chip storage , it will present encrypting expire , LED screen display blank screen;

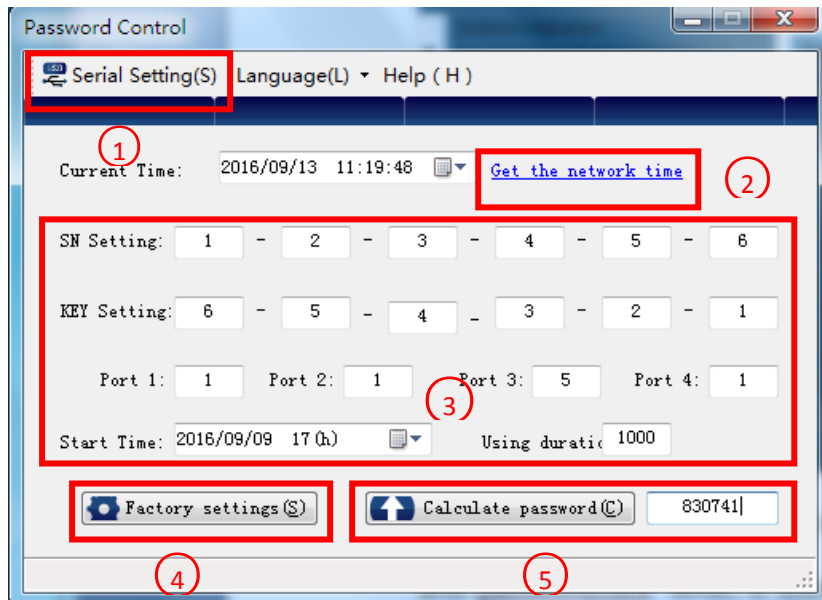
Set the time of "current time" plus "setting use hour" between 2090 to 2099 years, controller implicate encrypting has been canceled, no battery or battery plugging off will not affect on using;

Factory setting : send parameter to master controller, keep the data of master controller and softdog consistent , meanwhile if encrypting

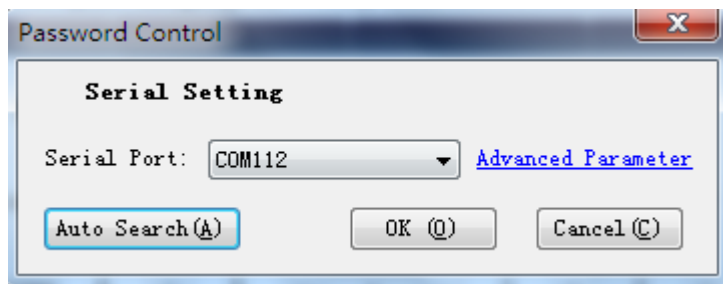
cancelled , you need to reset it to factory setting to start encrypting.
After encrypting starting , Password recalculating is available to modify
another info , no need to click FACTORY SETTING.

Password calculation : According to the setting below, get a dedicated
password through software internal automatically calculate formula.

2. Password Control Encrypt Steps



Step 1 : click SERIAL DETECTING , scanning automatically , check the
connecting of serials;



Step 2 : click "get the current network time" , keep the time of
softdog and computer consistent.

Step 3 : filled number in SN setting, KEY setting, port 1,2,3,4 , it is customized base on your need, the number should be recorded after filling.

Step 4: After setting the data above, click 'factory setting' will send info to controller when softdog is on, then start or forbid encrypting function.

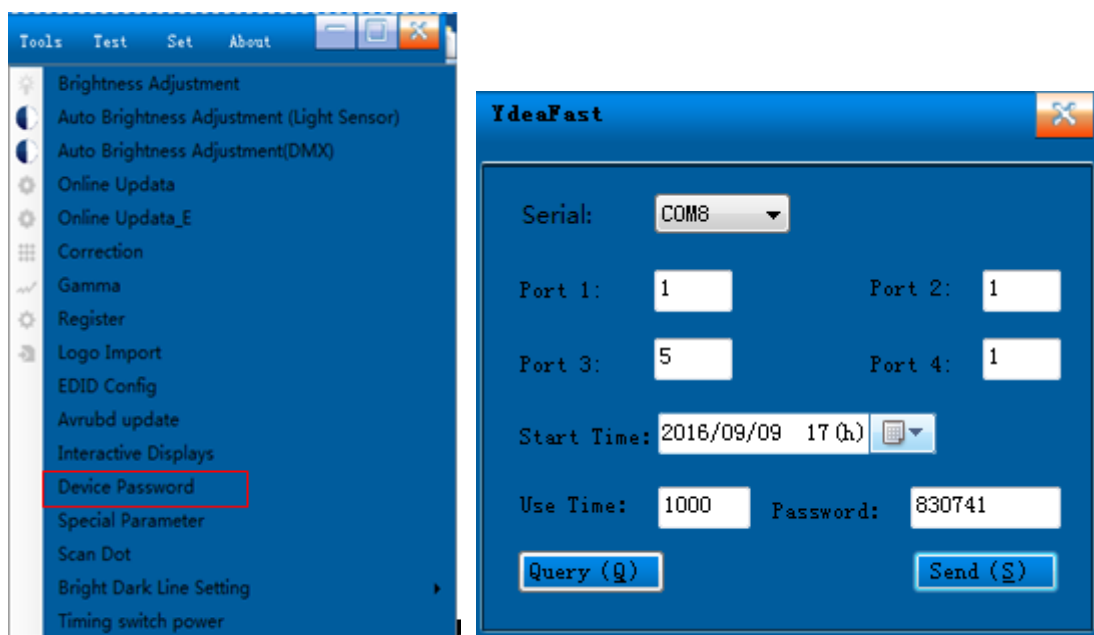
Step 5 : click "password calculation", software will calculate a dedicated password according to the setting above , after entering the dedicated password in master controller , encrypting start.

3.YdeaFast software operating

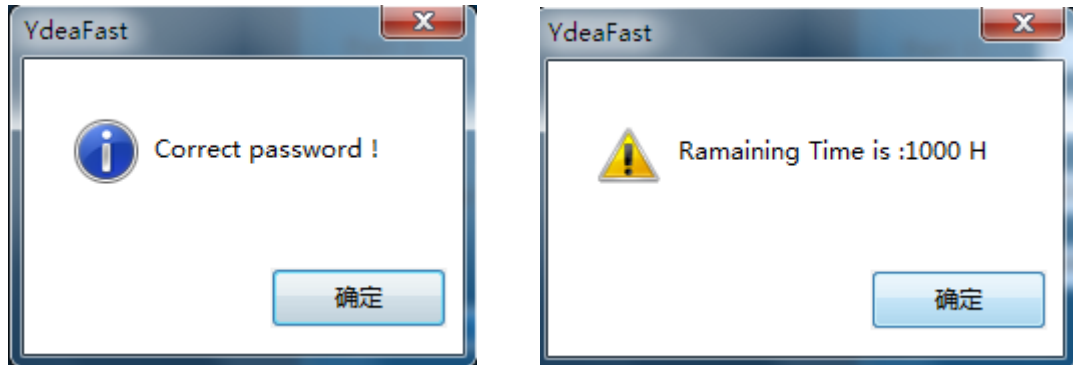
1. Click the icon below to start software



2. Click MENU-FUNCTION-DEVICE PASSWORD



Enter correspond number to port 1,2,3,4 , starting time, using hour and password,click 'send', if encrypt successfully, interface will display "password correct" , click " query"will display surplus time.



Remark:

- 1. LCD board of master controller is available for checking the status of encrypting , display " forbidden " means encrypting stop , displaying operating time means encrypting is operating.**
- 2. Open " password control " through softdog , after parameter setting , click "factory setting" , then start encrypting function.**
- 3. One softdog is able to modify password of arbitrary controller.**
- 4. On "password control" , number in blank of SN setting and KEY setting is custom (self-making the rule or filling in random by customer are all available)**
- 5. If the operating time plus current time is set between the years of 2090 to 2099 , encrypting will be forbidden, deal to the limitation of chip storage, when time larger than the year of 2100 , it equivalent to encrypting expire , LED display lock, it need to restart the encrypting function.**

6. If encrypting is expired and controller is out of use , restart encrypting need the manufacturer recalculate the password through “password control”to customer.

7. When screen encrypting is on, if client want to modify operating hour with no softdog , we can do softdog setting in manufacturer’s site to control artrary controller then get a new password, client can use new password to modify the operating hour on master controller software. It is necessary to keep the new data same as the data of SN setting ,KEY setting and port 1,2,3,4 that set in the encrypted controller, otherwise, controller will display error messages. To restart encrypting in the situation of encrypting forbidden or password expired, you need to send the controller back to factory to do resetting.

8. If encrypting is forbidden(status can be seen in LCD board of controller), controller can not receive operation resending instruction (it must be send back to factory restart through softdog then set operating hour) .