

Media Player Mdea User Manual

- **Version:** V04
- **Date:** 2015-07-31



CONTENTS

1	System Overview.....	1
2	System Features.....	1
3	Technical Specifications:.....	2
4	System Solutions.....	3
5	Software Application.....	3
5.1	Control Software.....	3
5.1.1	Software Installation.....	3
5.1.2	Software Uninstall.....	4
5.1.3	Software Control Instructions.....	5
5.2	Studio software.....	12
5.2.1	Software Installation.....	12
5.2.2	Software Uninstall.....	14
5.2.3	Software Configuration and Description.....	15
5.3	Client software.....	28
5.3.1	Software Installation.....	28
5.3.2	Software Uninstall.....	29
5.3.3	Software Configuration and Description.....	30
5.4	Cluster Software.....	45
5.4.1	Software Installation.....	45
5.4.2	Software Uninstall.....	47
5.4.3	Software Configuration and Description.....	48

1 System Overview

Mdea is YDEA TECH for the advertising market, introduced a new low-cost integration of innovative LED display information release system, mainly for advertising network publishing, building lighting display.

Mdea integrated networking publishing systems, stand-alone player system, LED control system in one, comes with a network interface (RJ45), WiFi, external 3G card, real-time publish information and video playback via network synchronization; comes with media player function, can be used as PC host uses to achieve a single player; built-in video processing and LED controller, compatible with LED synchronous asynchronous systems, and competitively priced. With this system, you can help customers simplify the system structure, reduce control costs.

It solved the structure of complex systems, more external devices, single function, control cost is too high, difficult system management, service problems.

2 System Features

■ integration with asynchronous

Mdea own video processing and LED controller, compatible with LED synchronous asynchronous systems.

■ simple system architecture

Mdea integrated networking publishing systems, LED control systems, stand-alone player system in one of the LED media playback device, to achieve a highly integrated architecture.

■ centralized network management

Mdea own network interface (RJ45), WiFi, external 3G card, you can publish information in real time over the network synchronization and video playback.

■ standalone media player

Mdea own media player, you can use as a PC host to achieve a single player, integrated hardware codec module can support 1080p HD video decoding and playback; content can be played after the store will make a good play on the hard disk and U disk.

■ control lower cost

Mdea competitively priced, less peripheral devices that can help customers achieve lower costs.

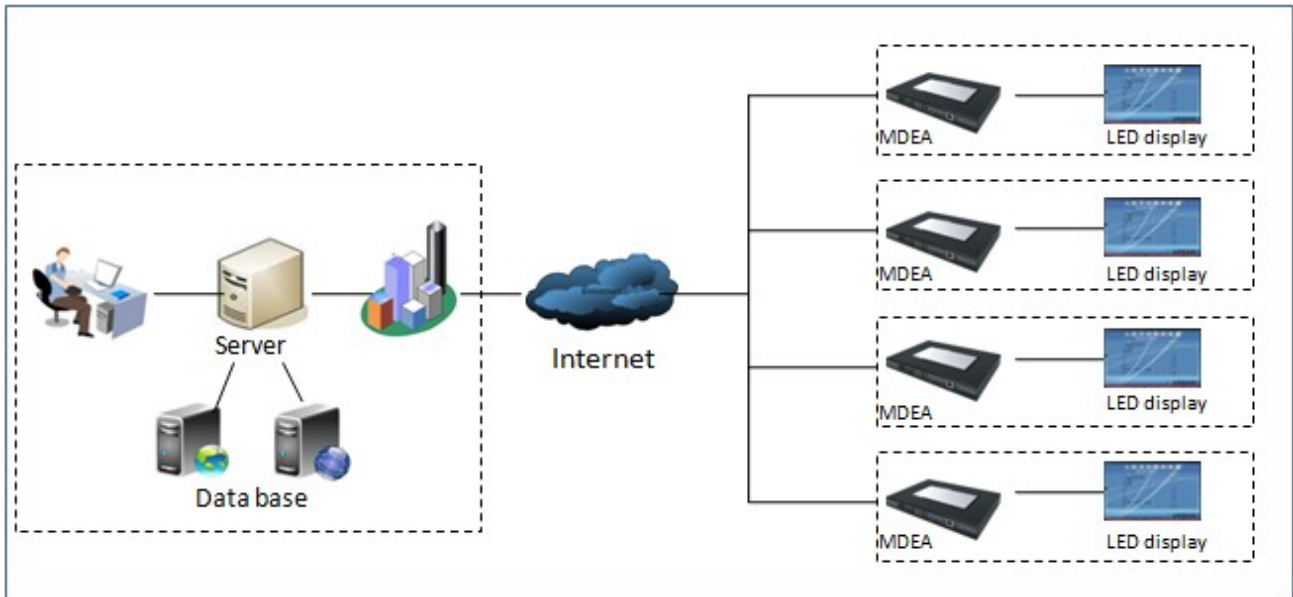
■ better safety performance

Mdea based on a common platform, stable performance does not crash, software upgrades easy to maintain, easy to use client, eliminating the need for a lot of training.

3 Technical Specifications:

Hardware Configuration		
CPU	Cortex-A7	
GPU	Mali400, Speed 400MHz	
RAM	DDR3 1GB	
ROM Flash	8GB	
Multi-media	Photo Viewer	BMP, JPEG, M-JPEG, GIF, PNG
	Video Format	MEPG1/2/4, H. 263/H. 264, RMVB, WMV/VC-1, MVC, AVS, MJPEG.
	Audio Format	MP3, WMA, WAV, OGG, FLAC, ALAC, APE, AMR, AAC, AC-3
Interface Configuration		
LAN	10M/100M Ethernet network, RJ-45 Interface	
HDMI out	1 x HDMI1.3 Output (1280*720/60hz)	
HDMI in	Support HDMI/DVI input	
WIFI	802.11b/g/n	
3G	Build in HuaWei 3G module	
Audio	2 x Standard audio interface	
USB	2 x USB, Support OTG、HOST and DEVICE, 2*USB-A (Support a mouse, keyboard)	
COM	Uses standard USB-B (USB to serial)	
LCD	Support Capacitive touch module	
LED Video	2 x RJ45, Support 1024*600*24bit*60Hz	
Software Configuration		
Operating system	Andriod 4.2.2	
Control Software	In the system	
Player software	In the system	
Electrical Specifications		
Power	Switching Power Supply (12V)	
Temperature	0°C ~60°C	
Consumption	≦25W	
Size (L× W)	206 mm × 100 mm (L× W)	

4 System Solutions

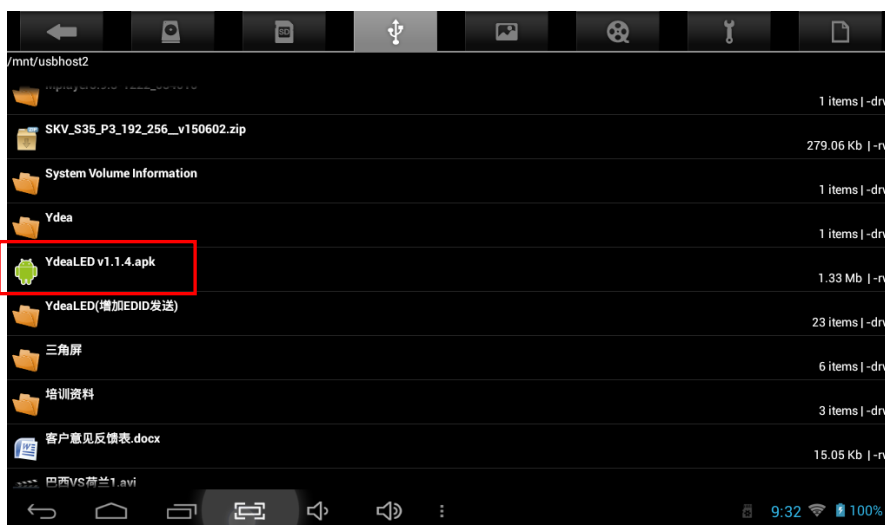


5 Software Application

5.1 Control Software

5.1.1 Software Installation

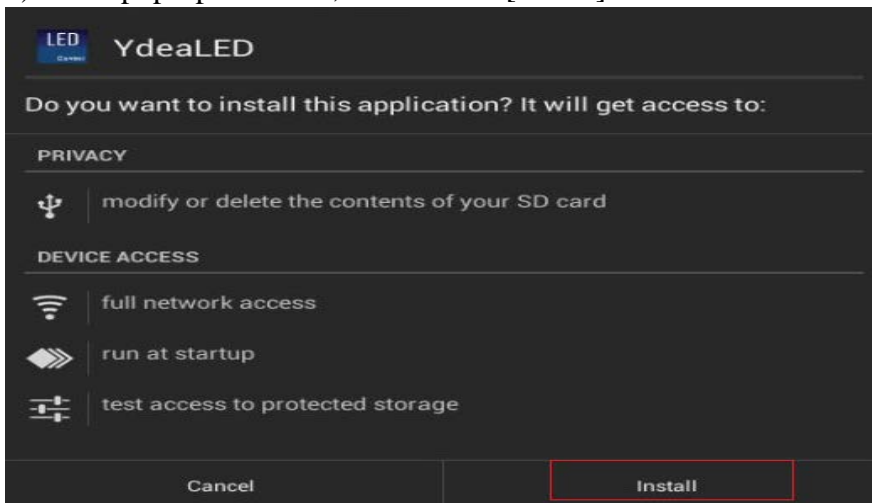
1) In the APP File Manager, find the installation package (YdeaLED v 1.1.4.apk), double click the install package.



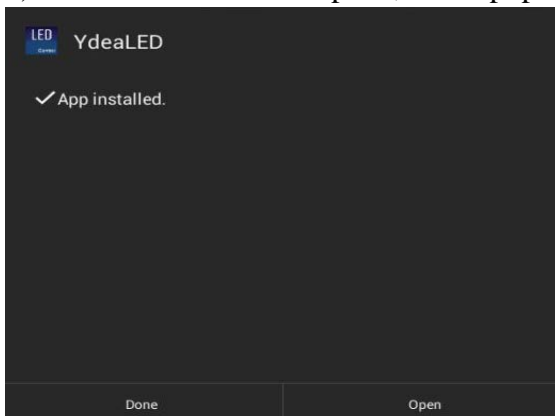
<http://www.ydeachn.com/>

Address: Bao'an District of Shenzhen City white pine Road of Founder Technology Park A1 building 4 floor

2) In the pop-up interface, click on the [Install].

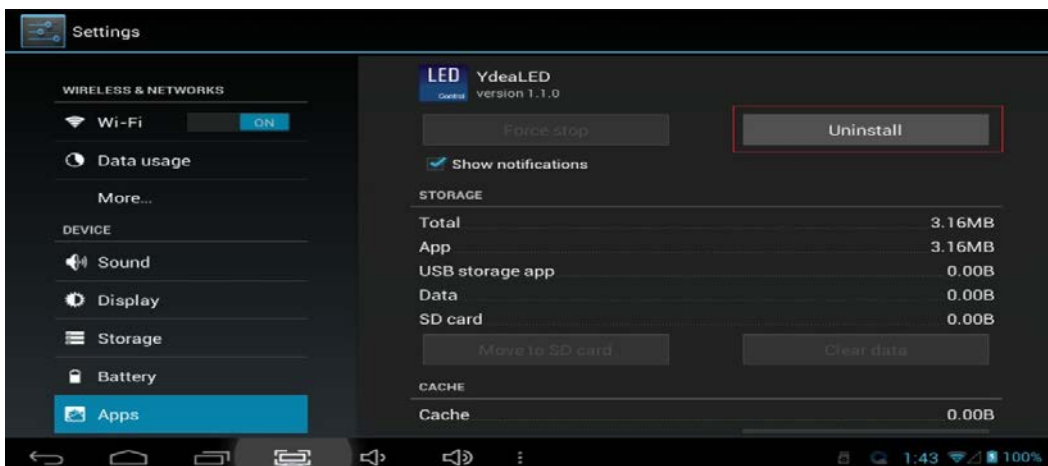


3) The installation is complete, in the pop-up interface, click on the [Done].

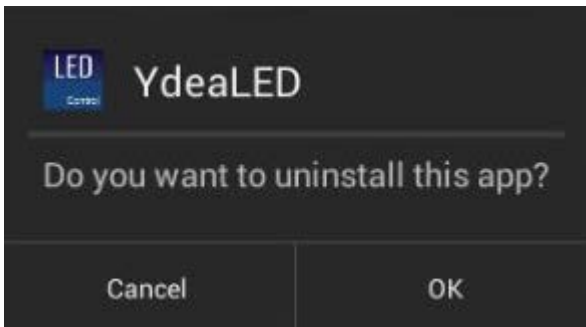


5.1.2 Software Uninstall

1) Click [System settings]-[Apps], click the YdeaLED icon, click the [Uninstall] button.



2) In the pop-up interface, click [OK] to complete the uninstall.



5.1.3 Software Control Instructions

Note:

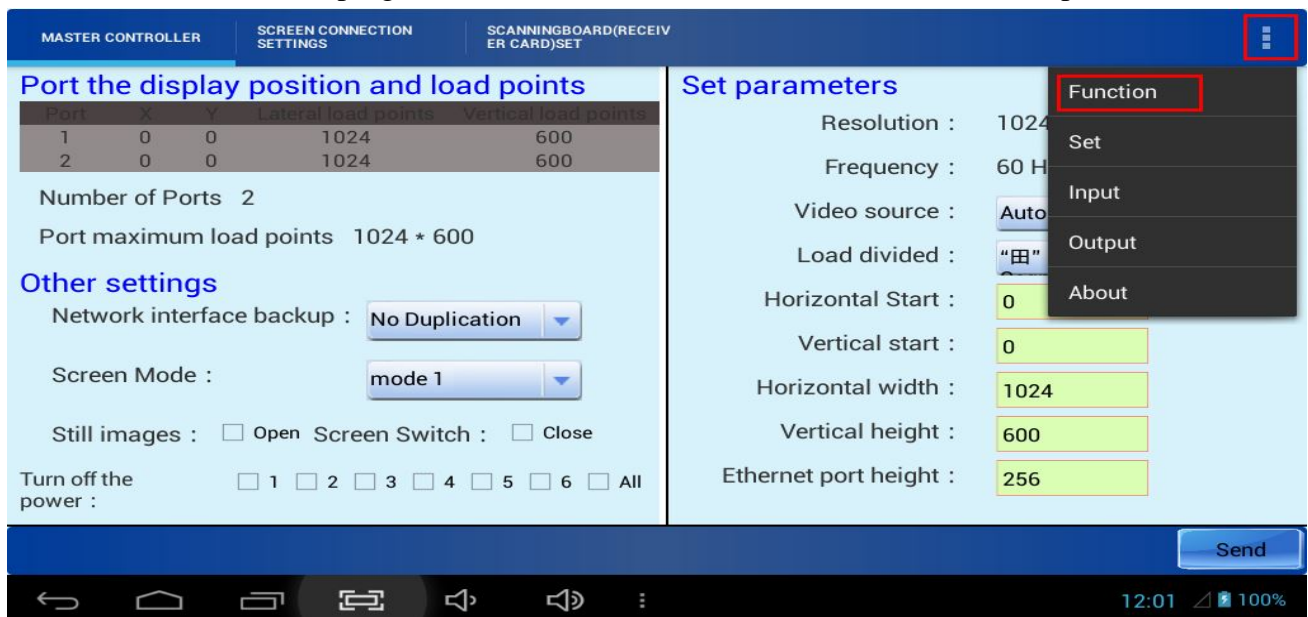
- 1) According to the actual use of Mdea, the control software settings is divided into two modes, which is Mdea-C mode, Mdea-Micro mode.
- 2) Mdea-C mode is suitable for situations when Mdea-C do not connected to the distributor.
- 3) Mdea-Micro mode is suitable for situations when Mdea-Micro connected to the distributor.

■ Mdea-C mode

- 1) click the YdeaLED icon, open the control software.



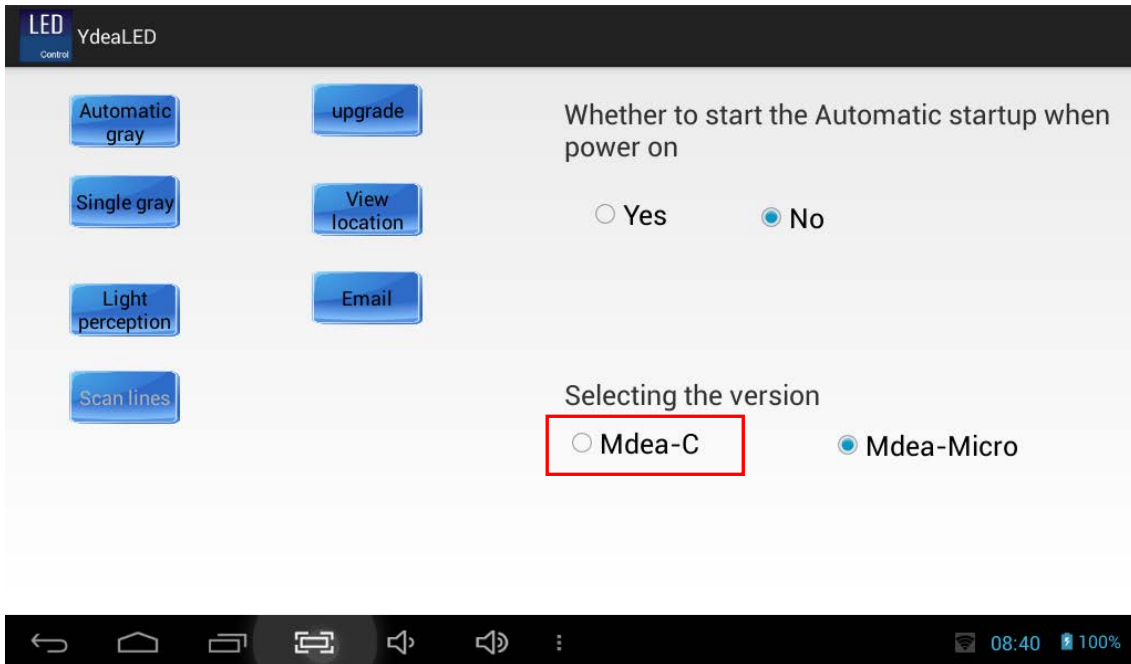
- 2) Click button in the top right corner on the screen, then click [Function] in the pull-down menu.



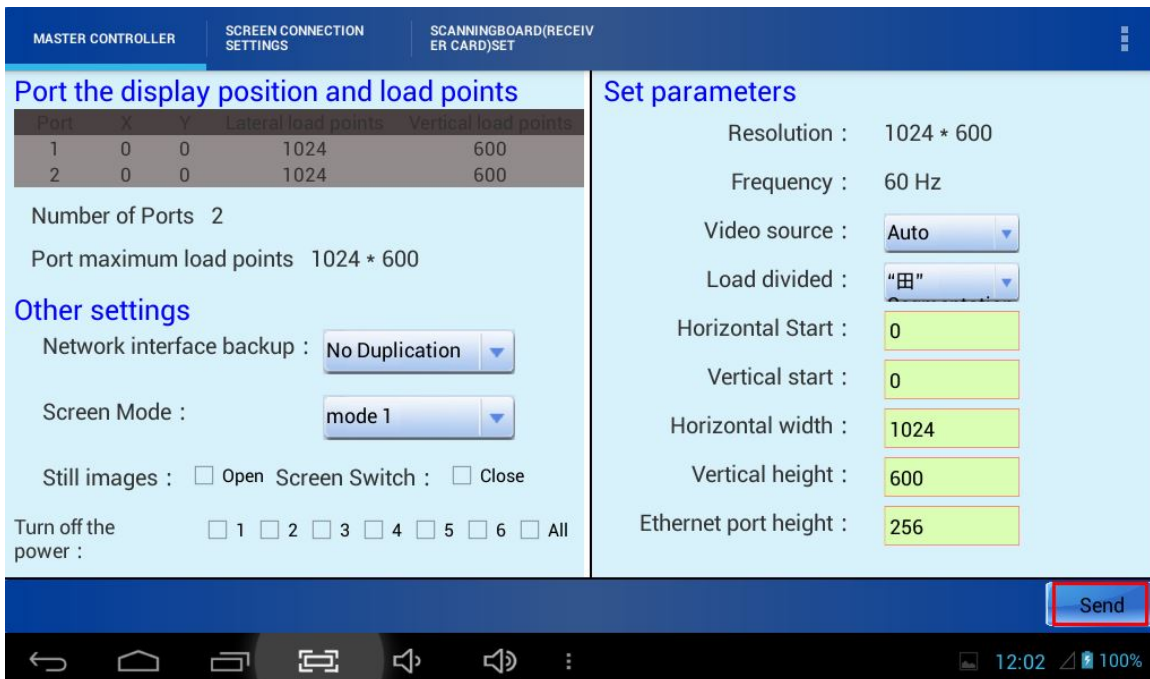
<http://www.ydeachn.com/>

Address: Bao'an District of Shenzhen City white pine Road of Founder Technology Park A1 building 4 floor

3) On the menu of [Selecting the version] you can find three versions. Here you need to select Mdea-C mode. After setting, click [Back] button on the bottom of the screen.



4) Enter the MASTER CONTROLLER interface of the software, which do not need to make any settings, just click [Send] on the bottom.



Setting Description:

[Video source]: The video source is set to [Auto].

[Load Divided]: A tape-shaped partition dividing fixed field.

[Horizontal Start]: large-screen display setting area start X-axis position, in the upper left corner

<http://www.ydeachn.com/>

Address: Bao'an District of Shenzhen City white pine Road of Founder Technology Park A1 building 4 floor

coordinates of the display starting point for the calculation of lateral body of the screen to display the original point of the starting position is 0 by default.

[Vertical start]: large-screen display setting area Y-axis starting position, the starting point to calculate longitudinal crystal display screen to the upper left corner of the display coordinates of the starting point for the original default position is 0.

[Horizontal width]: set the actual width Mdea load, the default is 1024.

[Vertical height]: set the actual height Mdea load, the default is 600.

[Net port height]: Setting master first image data output port maximum height.

[Network interface backup]: to set the replication relationship between host ports.

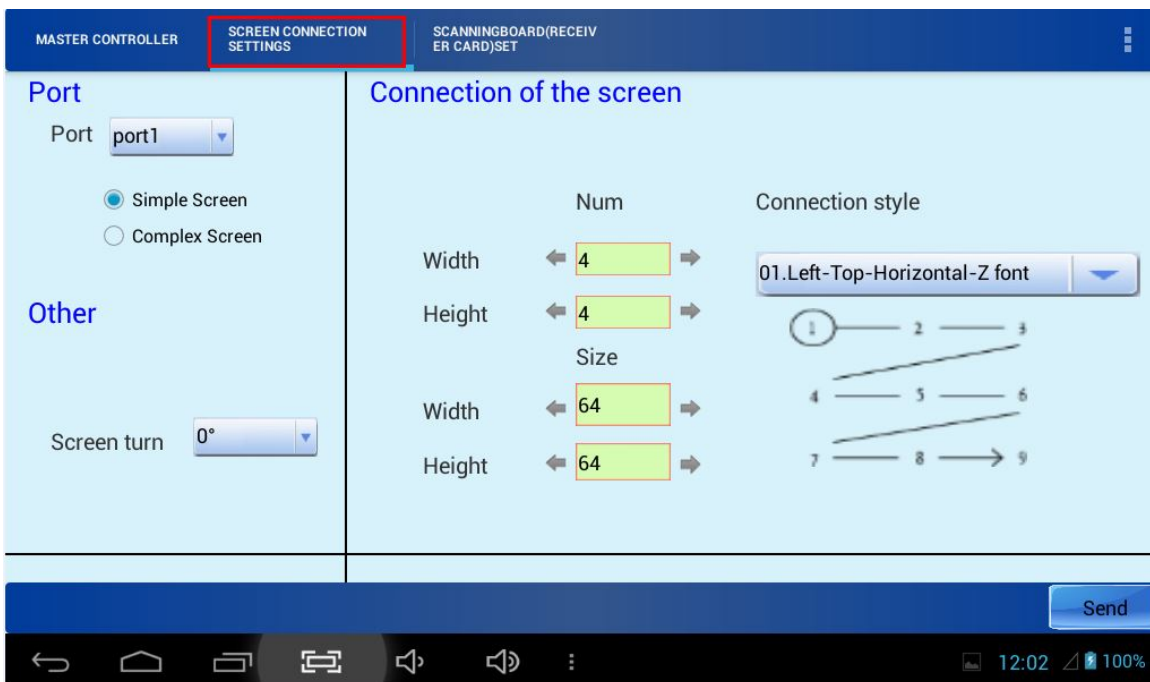
[Screen Mode]: Set a specific type of the display, the function for expansion. Reserved.

[Screen Switch]: Off, black screen, nothing is displayed; open the screen to normal playback. The default setting is on.

[Still images]: open, active window to freeze the picture of the current screen; off, normal playback screen. The default setting is OFF.

[Power Off]: used to control display power switch, this feature not yet open.

5) Click the [SCREEN CONNECTION SETTINGS] on the top of the screen. You need to set Screen connection in the interface.



[Port]: Mdea has two output ports, labeled "OUT1" and "OUT2", using which port to output, and you should select [port1] or [port2] in this interface. In the bottom of the port, select [Simple Screen].

[Screen turn]: The program support screen rotation, this menu is useful. The default is 0.

[Number]: Width: Number of receiving card used horizontally; height: Number of receiving card vertical use.

[Size]: Width: a cassette receiving points in the horizontal direction of the display; Height: a

<http://www.ydeachn.com/>

Address: Bao'an District of Shenzhen City white pine Road of Founder Technology Park A1 building 4 floor

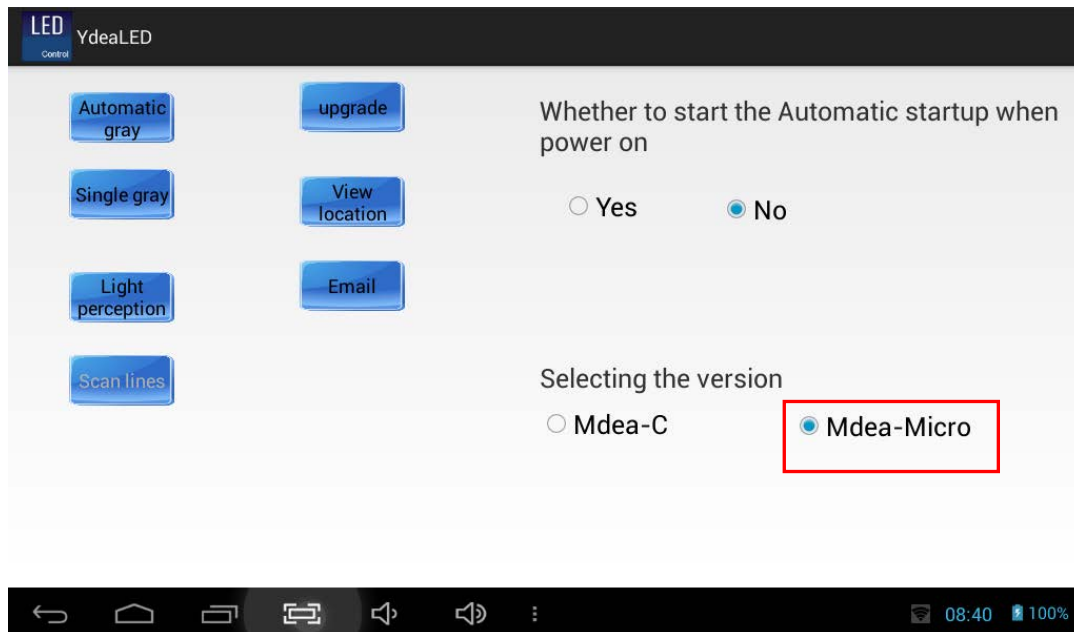
receiving cassette display dots in the vertical direction.

[Connection]: to display the actual signal lines, select the corresponding connections can be. After all the parameters are set, click on the bottom right corner of the [send].

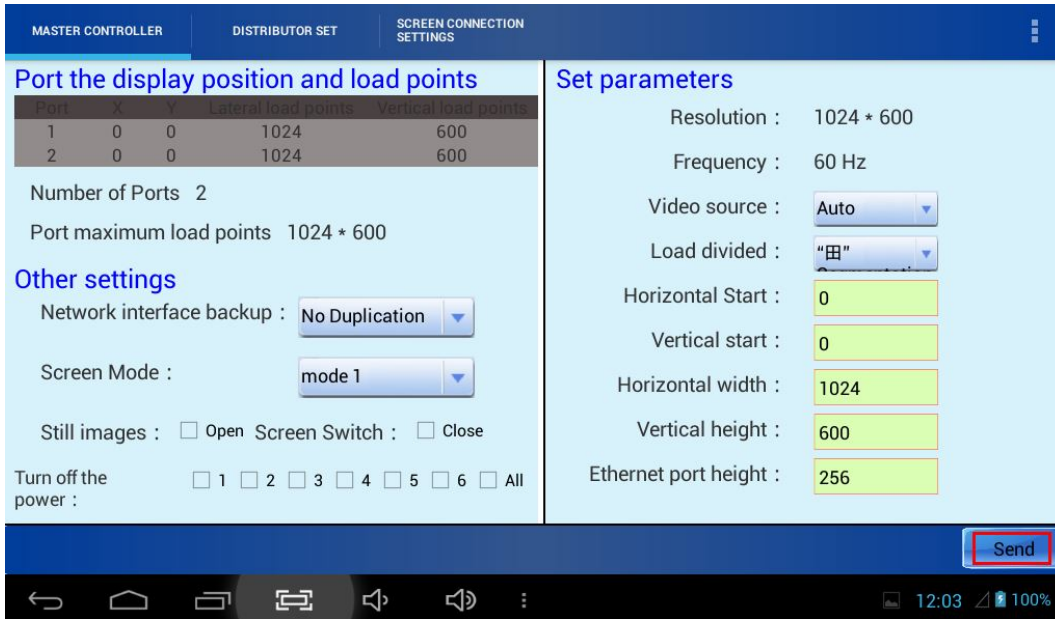
6) At this point in Mdea-C mode, all the settings have been completed. Display can be normal lighting.The next interface of [SCREEN CONNECTION SETTINGS] do not have to make any settings.

■ Mdea-Micro mode

1) Click button in the top right corner on the screen, then click [Function] in the pull-down menu.On the menu of [Selecting the version] you can find three versions.Here you need to select Mdea-Micro. After setting, click [Back] button.on the bottom of the screen.

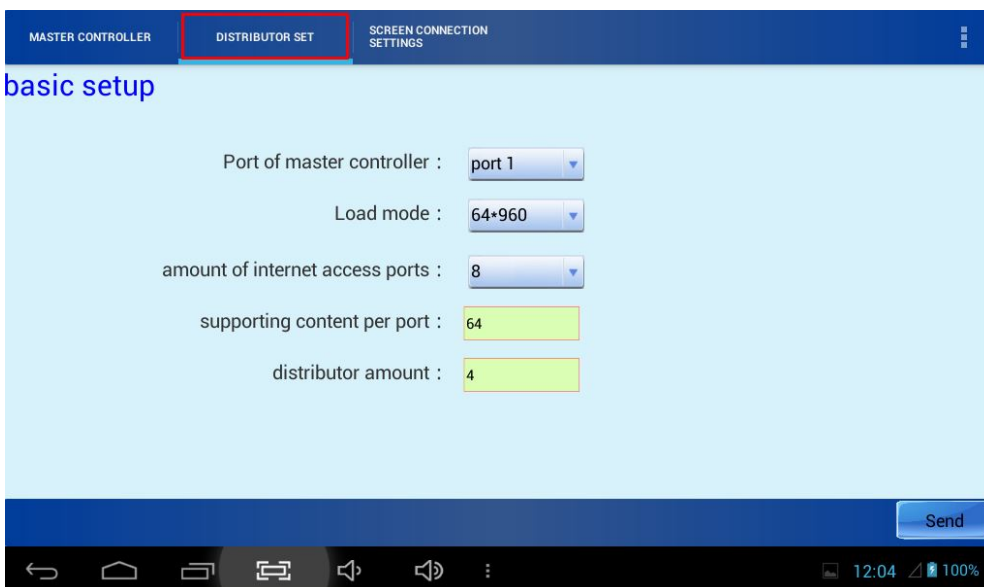


2) Enter the MASTER CONTROLLER interface of the software, which do not need to make any settings, just click [Send] on the bottom. (See description of all the menu in" Mdea-C mode").



3) The distributor set:

Click [DISTRIBUTOR SET] on the top of the screen, enter the interface.



- **[Port of master controller]:** Mdea has two output ports, labeled "OUT1" and "OUT2", using which port to output, and you should select [port1] or [port2] in this interface.
- **[Load Mode]:** There are four load mode. Which mode to use in the receiving card program has been fixed. Read the receiver card program "readme file" and select the corresponding load mode.
- **[amount of internet access port]:** 8 number of network ports by default, not be modified.
- **[supporting content per port]:** The content is a single-port receiving card carried by the display horizontally points.
- **[distributor amount]:** Number: Number 1 by default, not be modified.

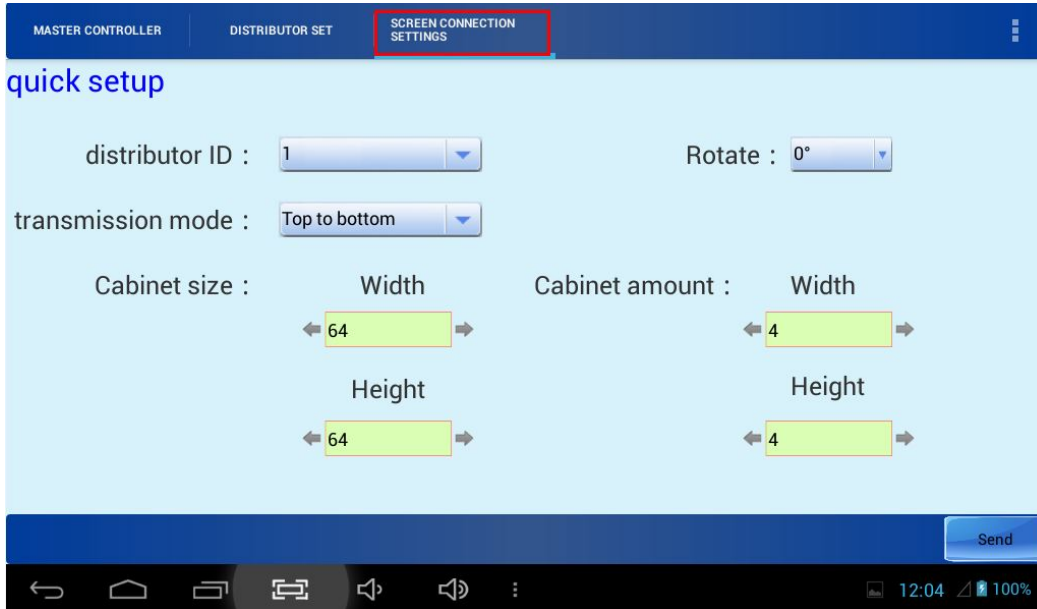
<http://www.ydeachn.com/>

Address: Bao'an District of Shenzhen City white pine Road of Founder Technology Park A1 building 4 floor

- After setting, click [send] on the bottom right corner.

4) Screen connection settings:

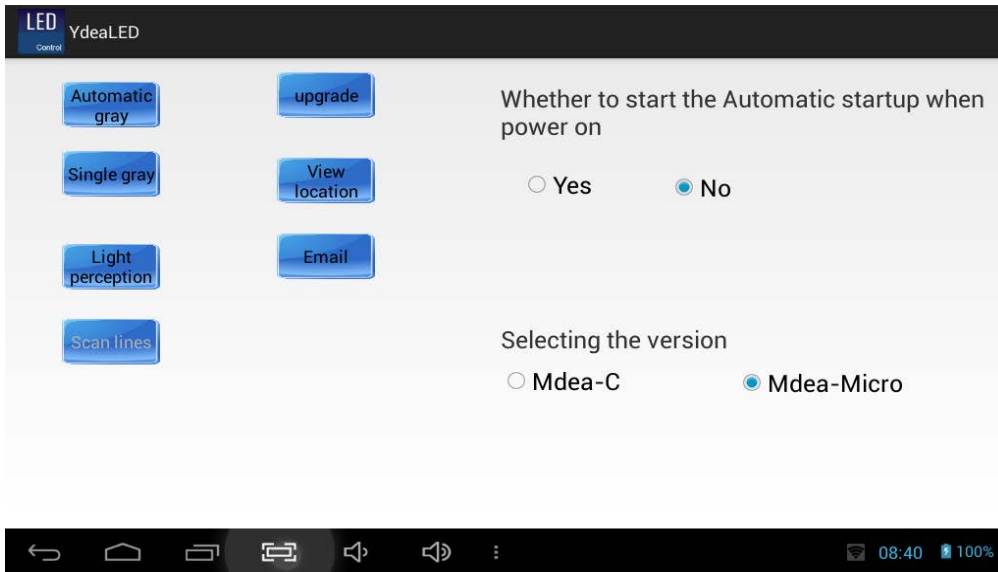
Click [SCREEN CONNECTION SETTINGS] on the top of the screen, enter the interface.



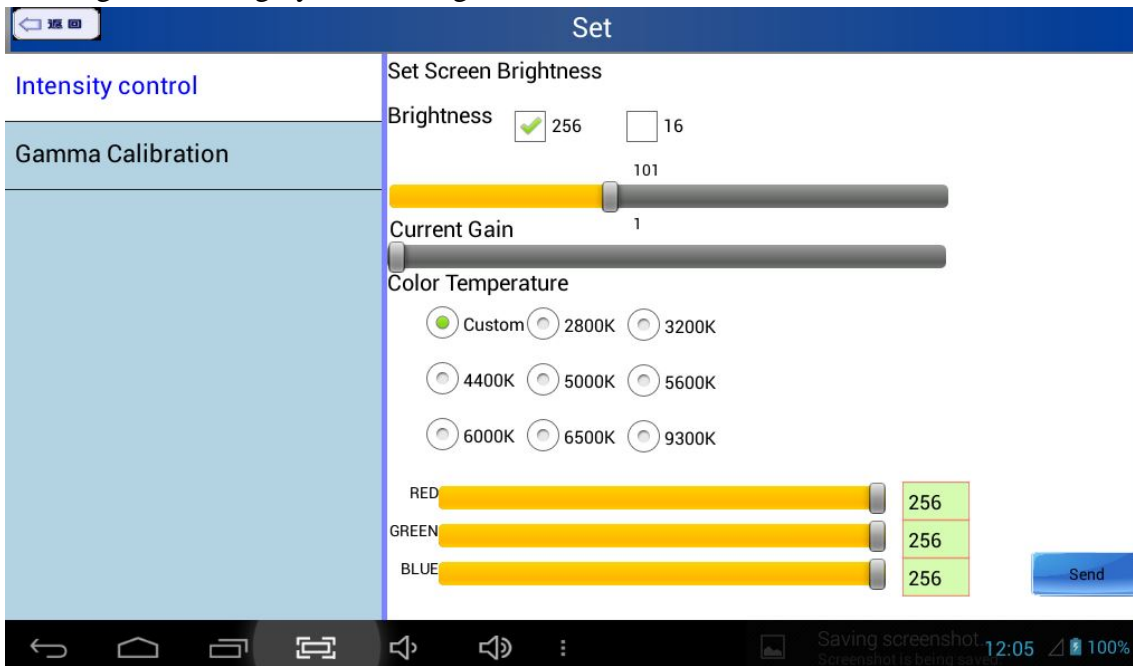
- **[distributor ID]:** The default is 1, do not need to set.
- **[rotate]:** The default is 0, do not need to set.
- **[transmission mode]:** from the display front, according to the network cable of the actual trend, select the corresponding transmission.
- **[Cabinet size]:**Width: a cassette receiving points in the horizontal direction of the display; Height: a receiving cassette display dots in the vertical direction.
- **[Cabinet amount]:**Width: Number of receiving card used horizontally; Height: Number of receiving card vertical use.
- After setting, just click [send] on the bottom.

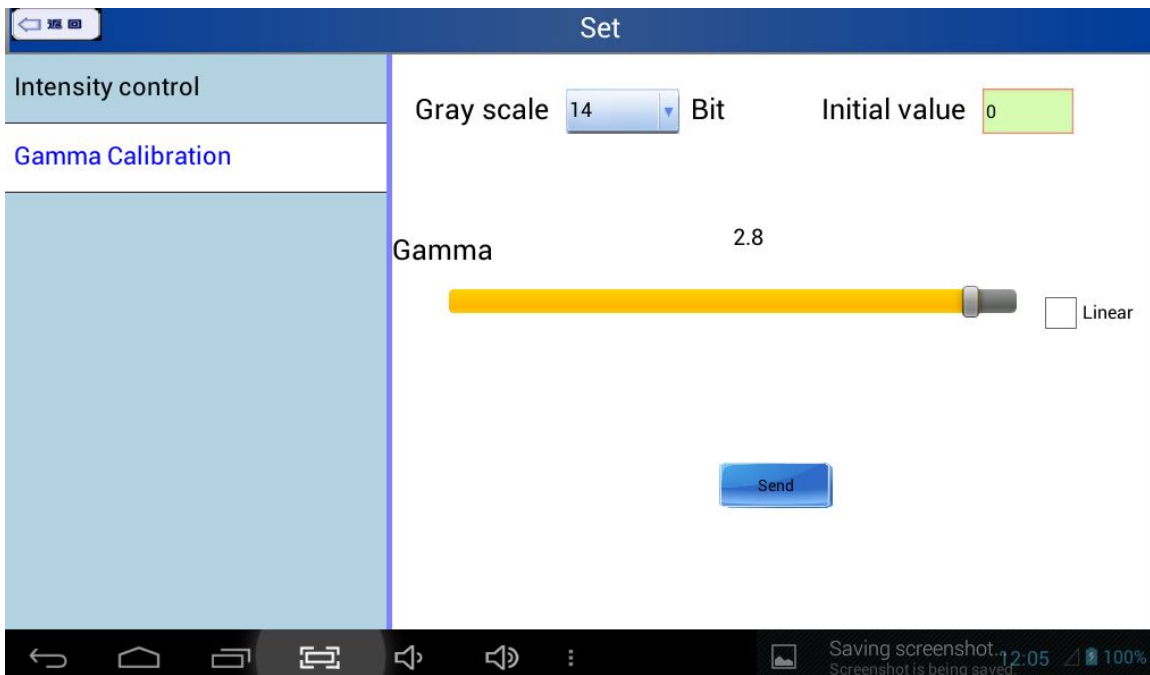
■ Other settings

- In Mdea-C mode and Mdea-Micro mode, click the icon on the top right corner of the screen to enter the [function] interface, there are ability to view the location, a single gray, gray-automatic, you can set the LED display Upon completion of the test. Set whether boot or not.



- Click the icon to the top right corner of the screen, enter the setup interface, you can set the brightness and grayscale settings.

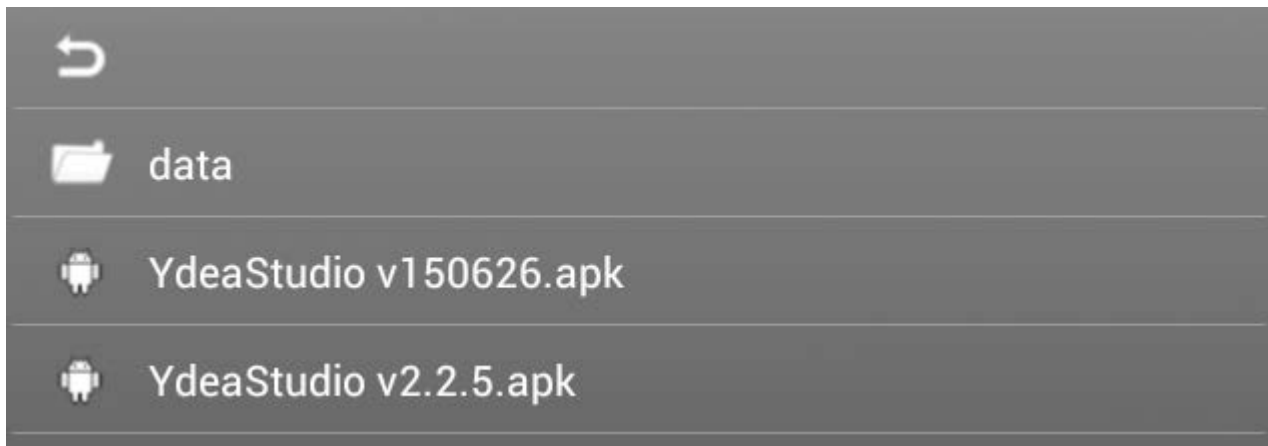




5.2 Studio software

5.2.1 Software Installation

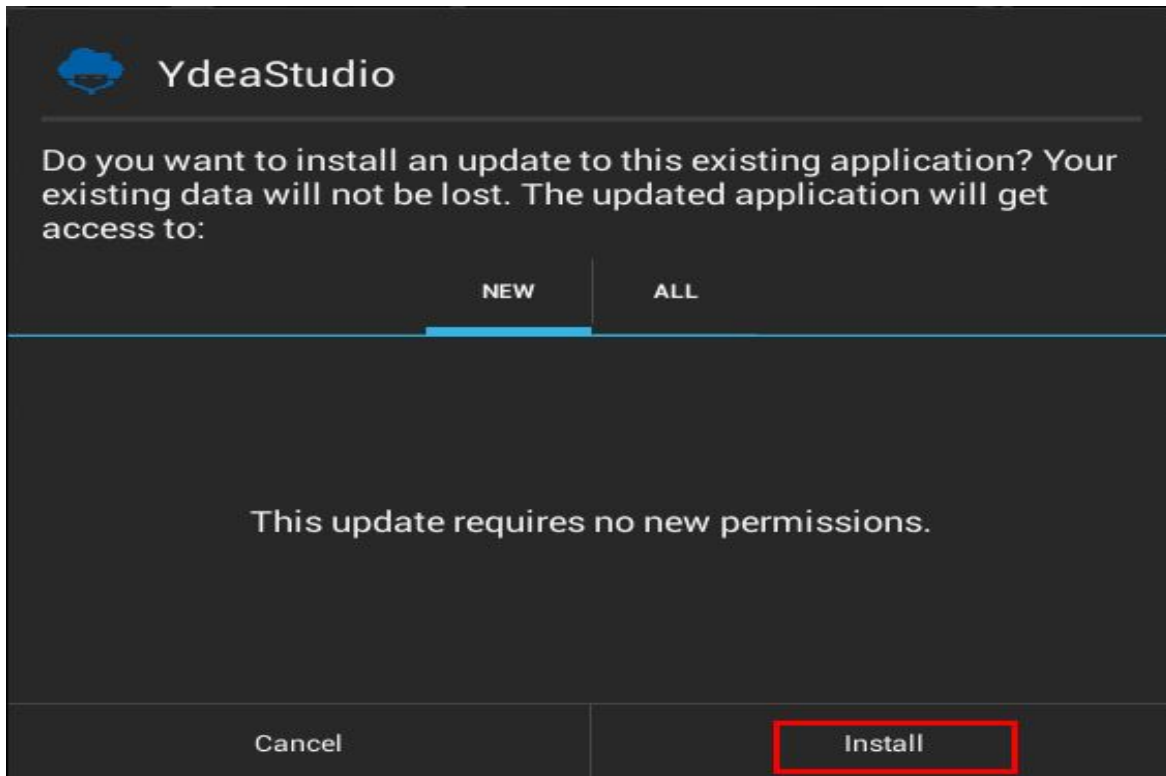
1) In the APP of File Manager, find the installation package (YdeaStudio v2.1.4.apk), double click the install package.



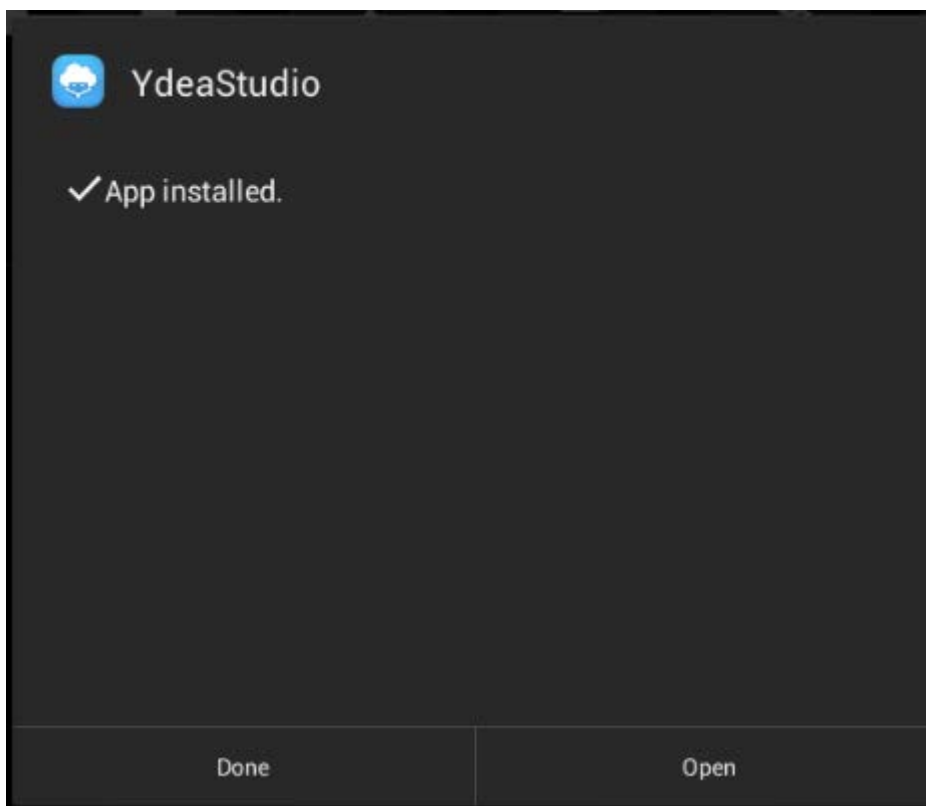
2) In the pop-up interface, click on the **[Install]**.

<http://www.ydeachn.com/>

Address: Bao'an District of Shenzhen City white pine Road of Founder Technology Park A1 building 4 floor



3) The installation is complete, in the pop-up interface, click on the [Done].

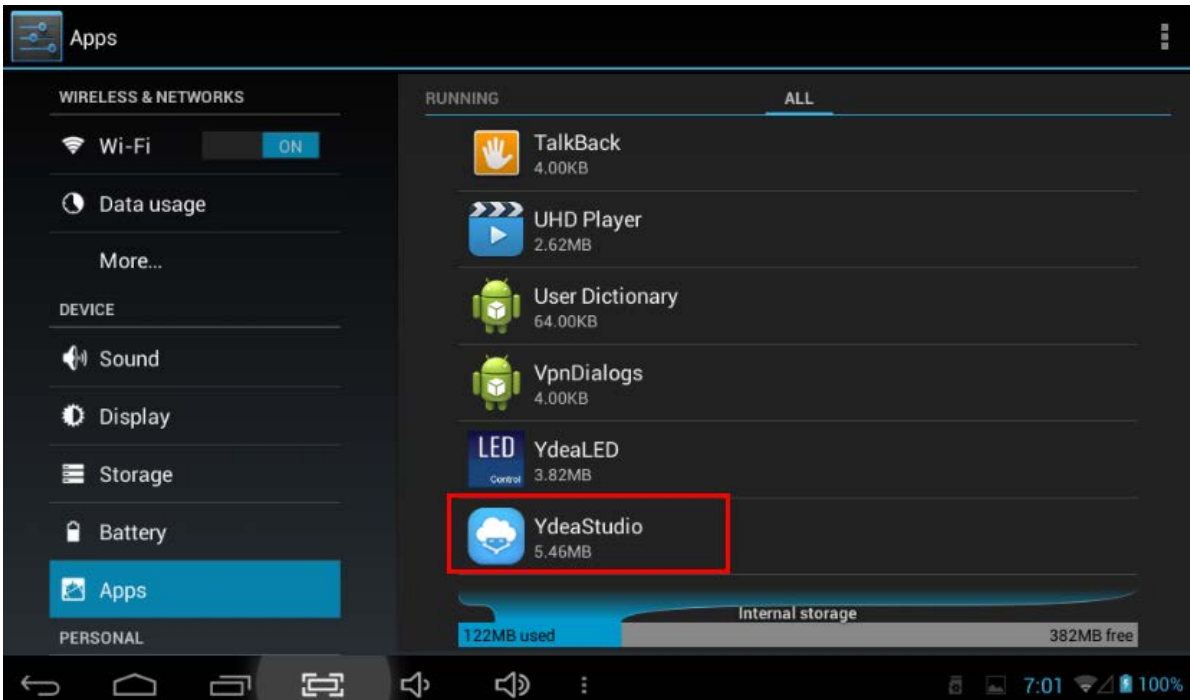


<http://www.ydeachn.com/>

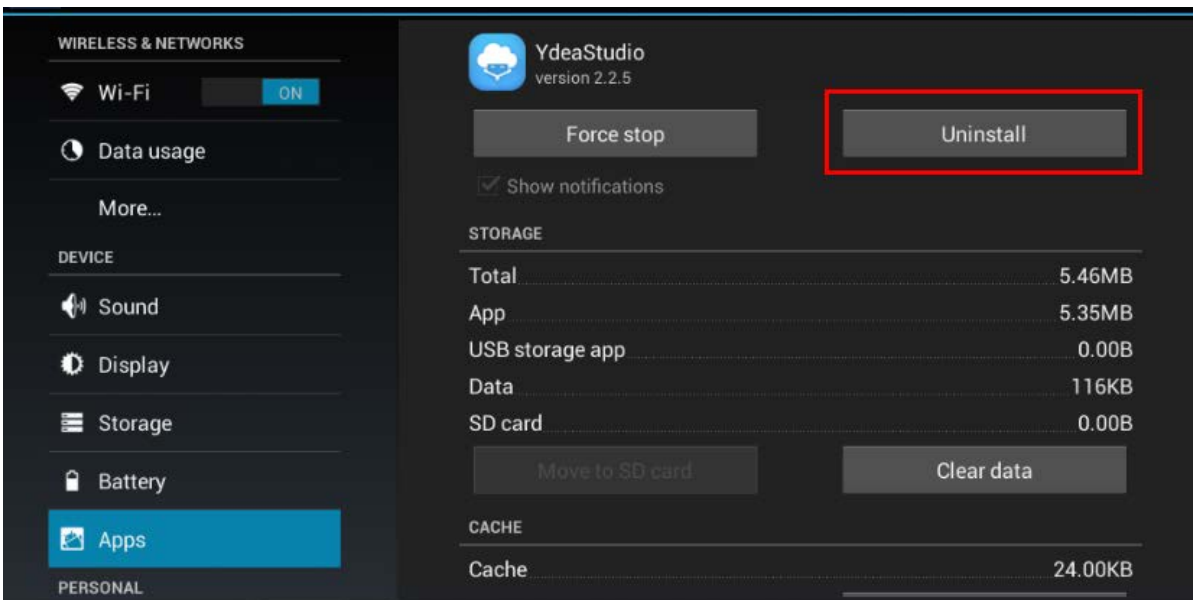
Address: Bao'an District of Shenzhen City white pine Road of Founder Technology Park A1 building 4 floor

5.2.2 Software Uninstall

1) Click [System settings]-[Apps], click the YdeaLED icon, click the [Uninstall] button.



2) In the pop-up interface, click [Uninstall] to complete the uninstall.

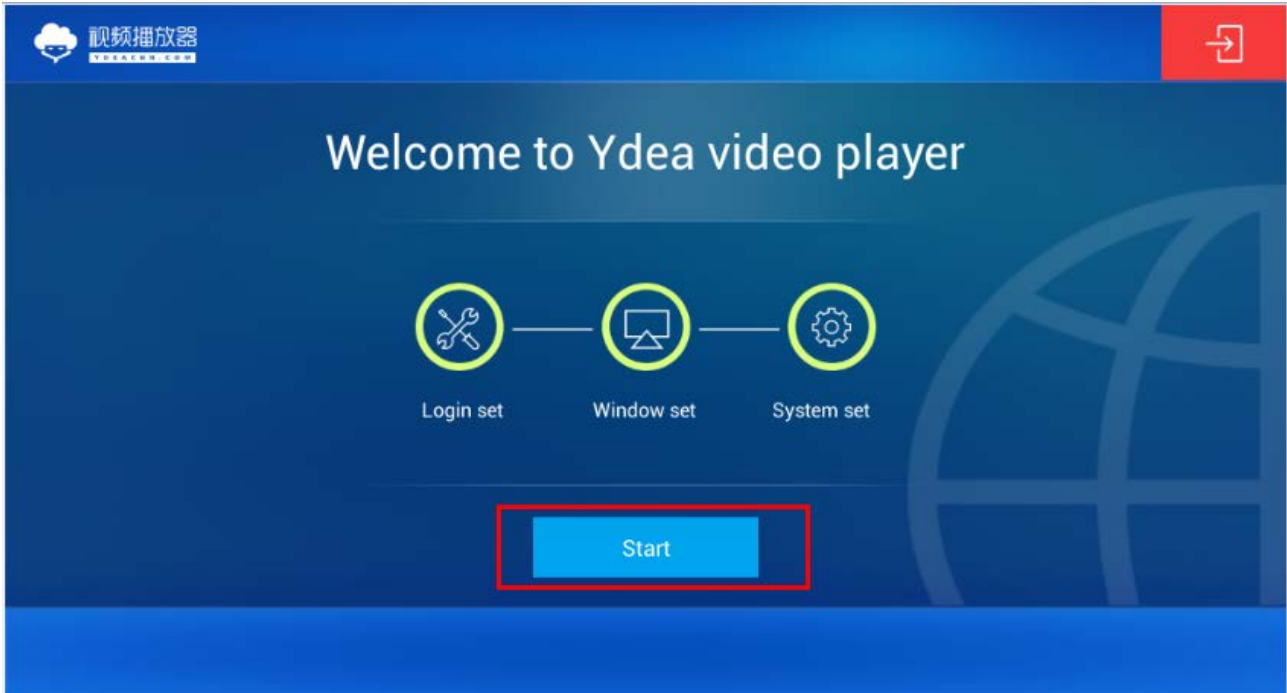
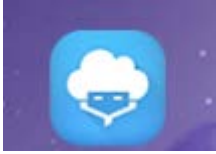


5.2.3 Software Configuration and Description

一: Login

1. open the software

Click the icon on the desktop, then click “start” to enter the player interface.

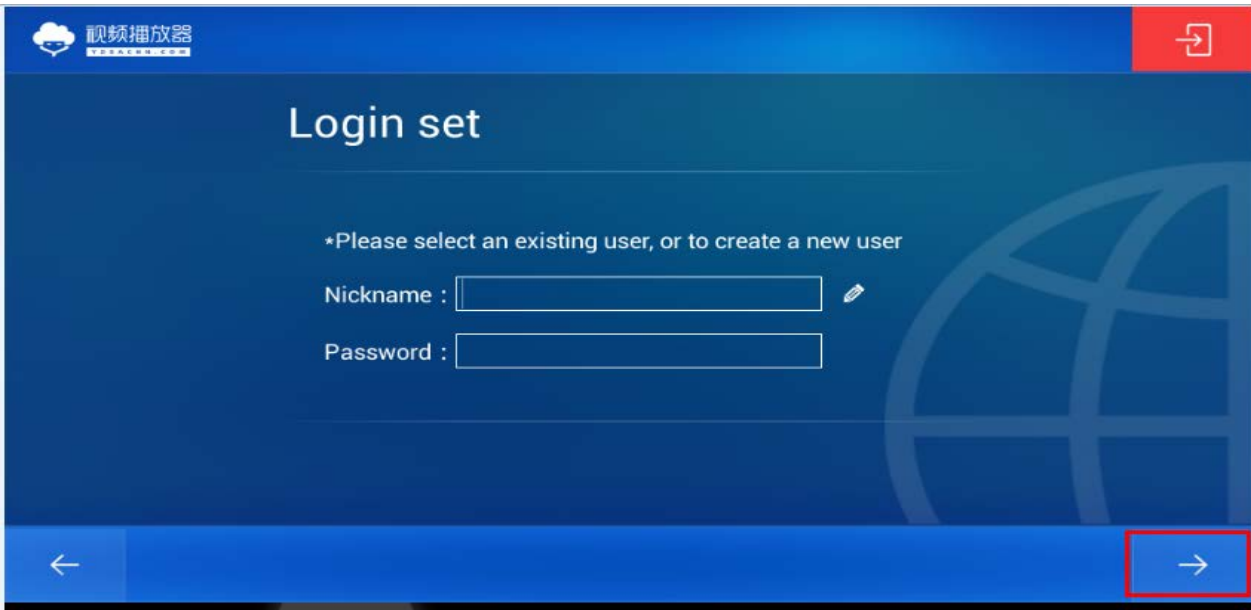


2. Login settings:

2.1 according to demand free to set username and password of the Mdea. Convenient mobile client to control.

2.2 If the username and password has been set, you can directly click below icon, select the corresponding user name.

2.3 After setting the username and password,click arrow to enter the next interface.



3 Video Window Settings:

3.1 video window can be preset setting window position,size and so on.

3.2 on the first you can use the default values, and then into the software, and modify it.

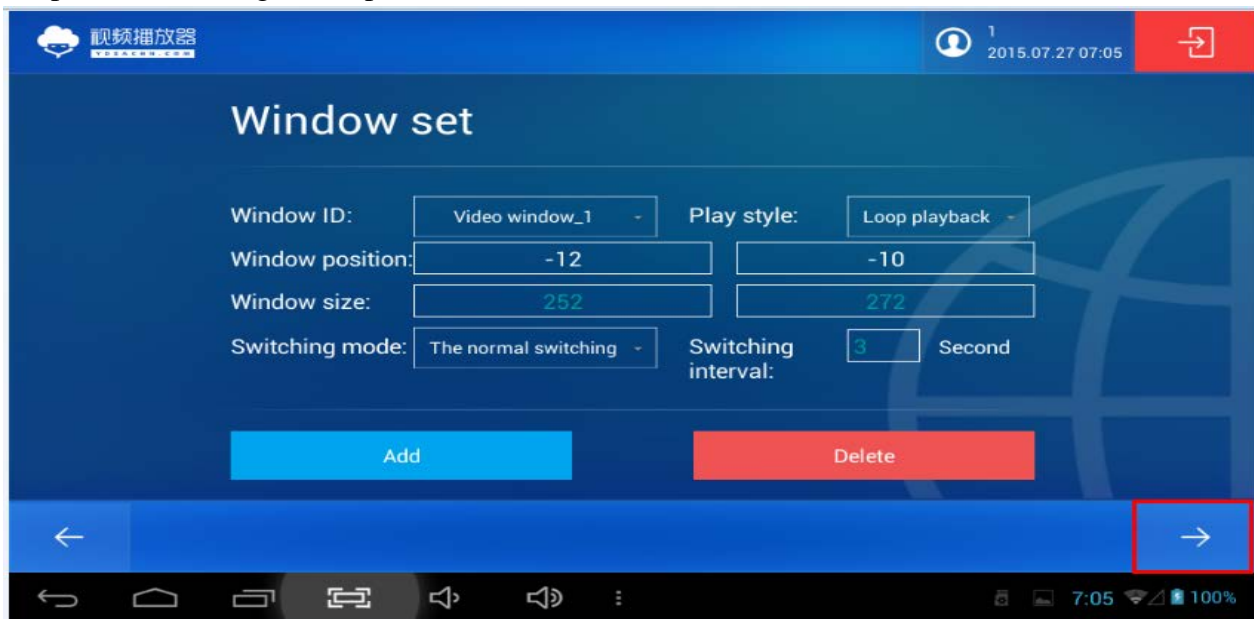
3.3 After parameter setting, first click [Save], click arrow to enter the next interface.

3.4 In this interface, you can see just the window has been set, and the window can be added or deleted.

3.5 The player can add up to two windows.

3.6 The interface can be the first to use the default values, and then into the software, and then modify it.

3.7 parameter setting is completed, click arrow to enter the next interface.

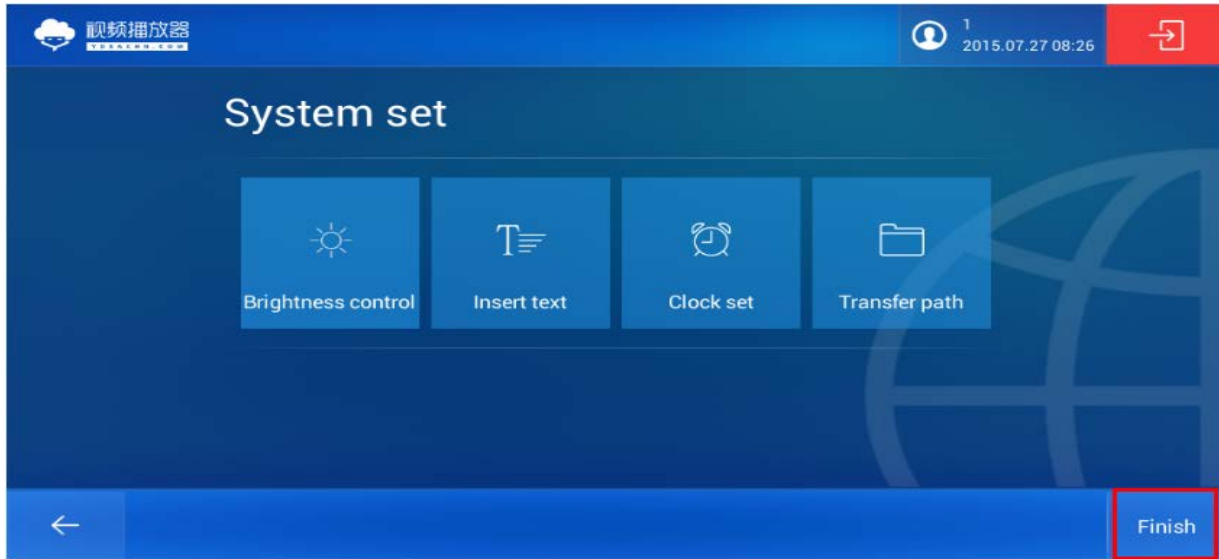


4 System Setting:

4.1 Before entering the player interface, you can set up some parameters

4.2 The interface can be the first to use the default values, then after entering the software, and then modify it.

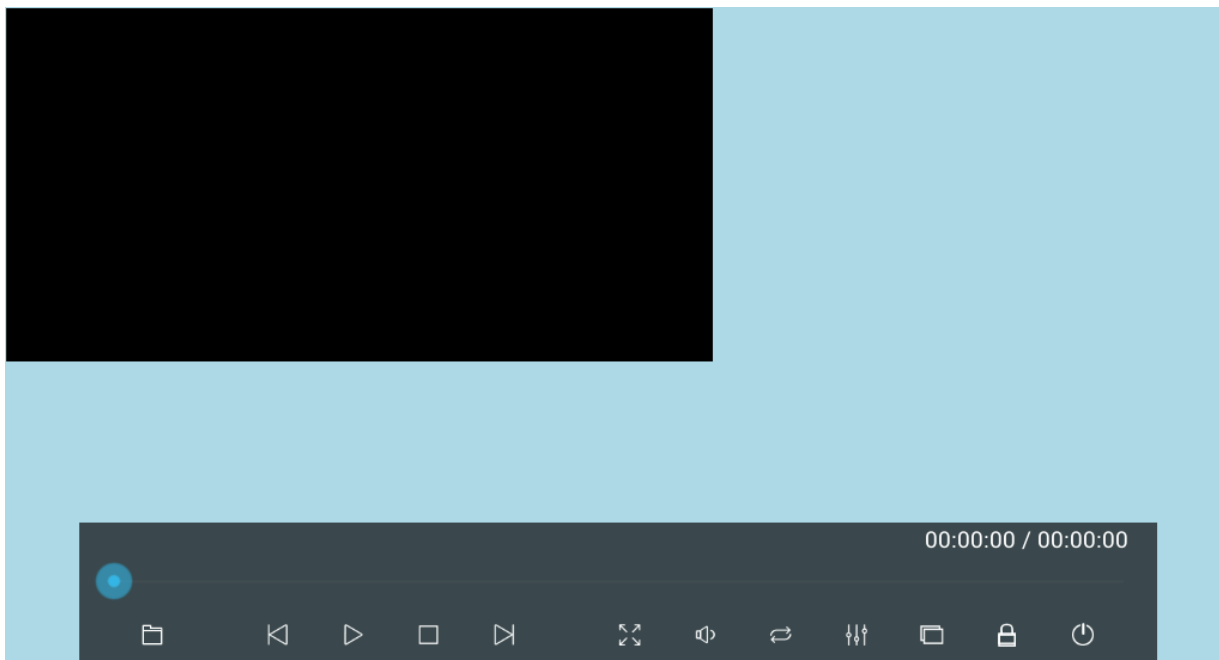
4.3 setup is complete, click [Finish], you can enter the playback interface.




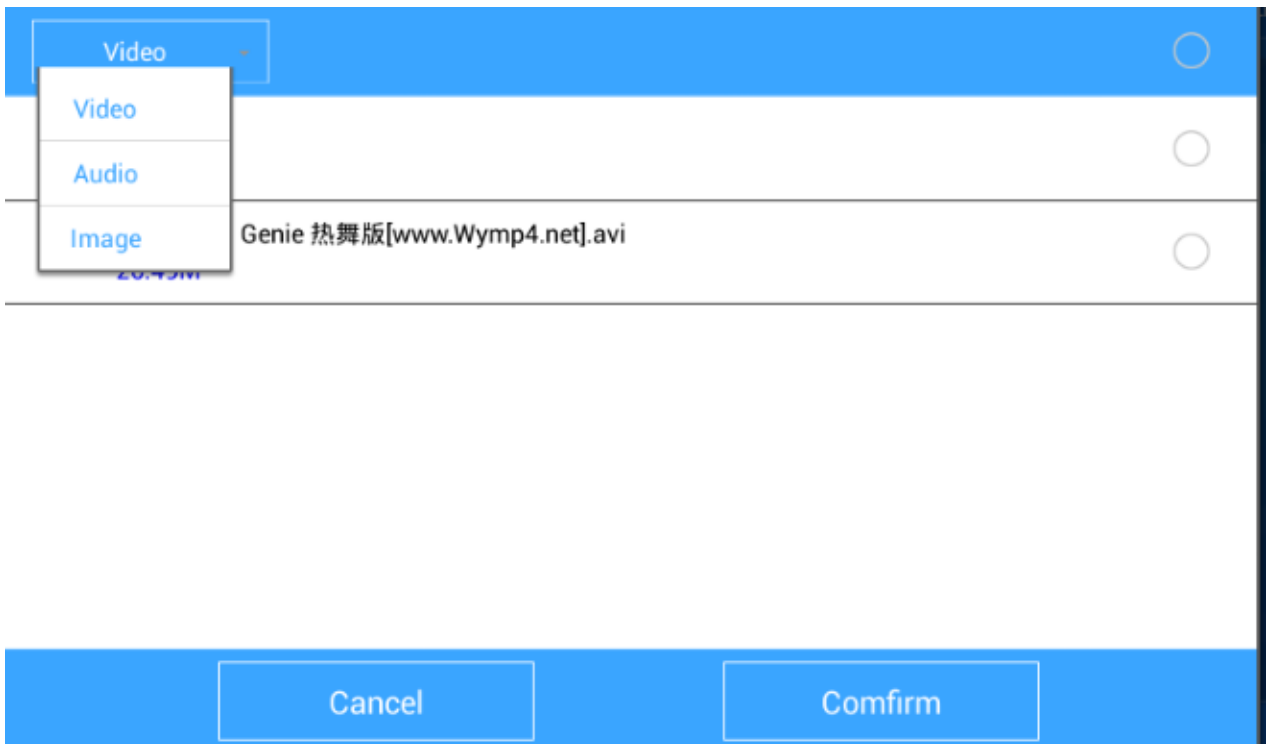
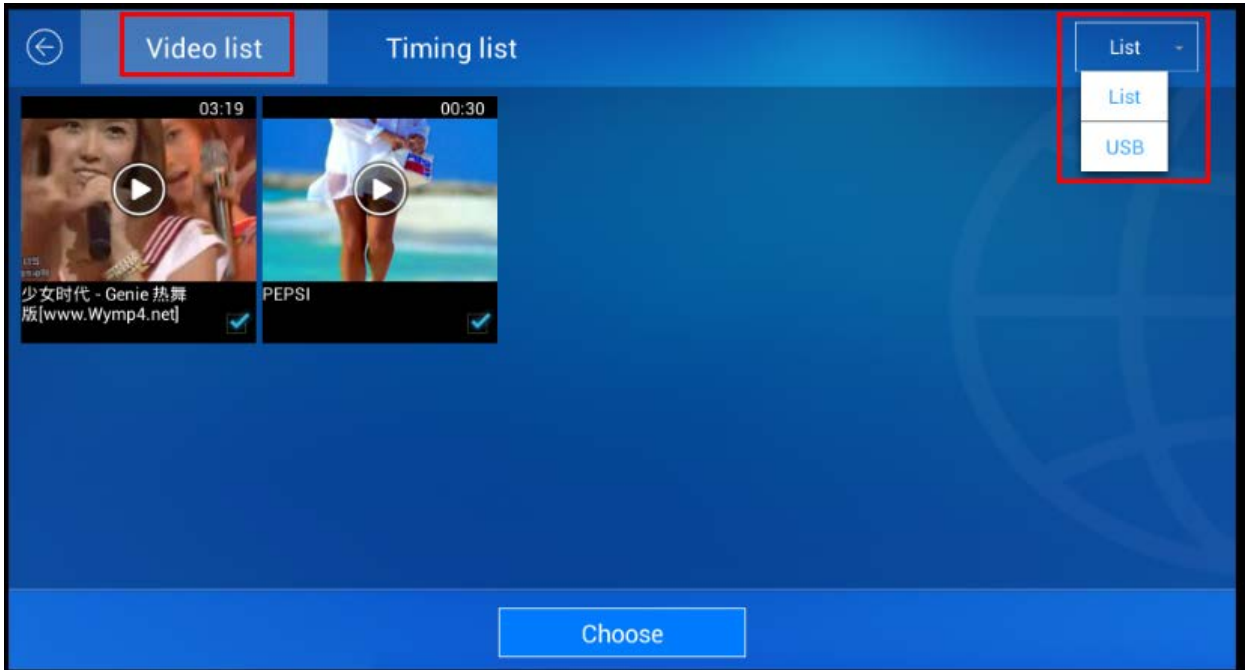
■ Video Control Bar

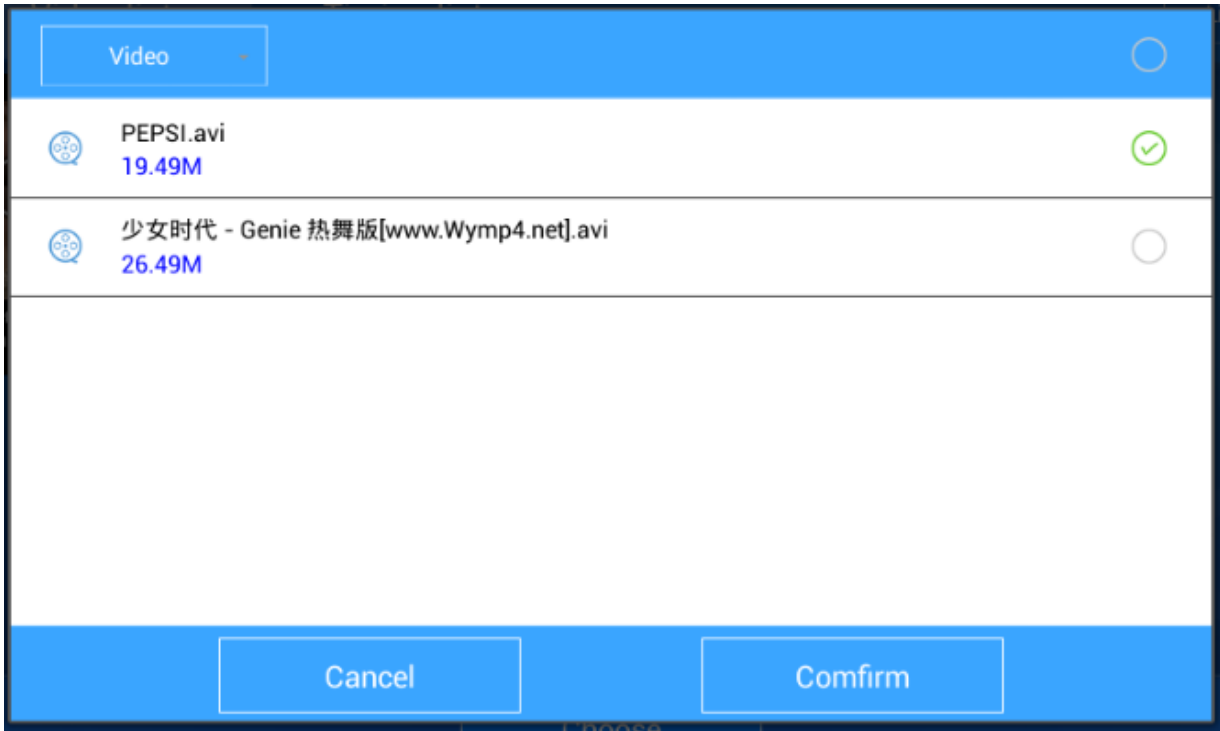
1 Open the Control Bar:

1.1 After into the video screen, click on the play window and control bar appears at the bottom of the screen.

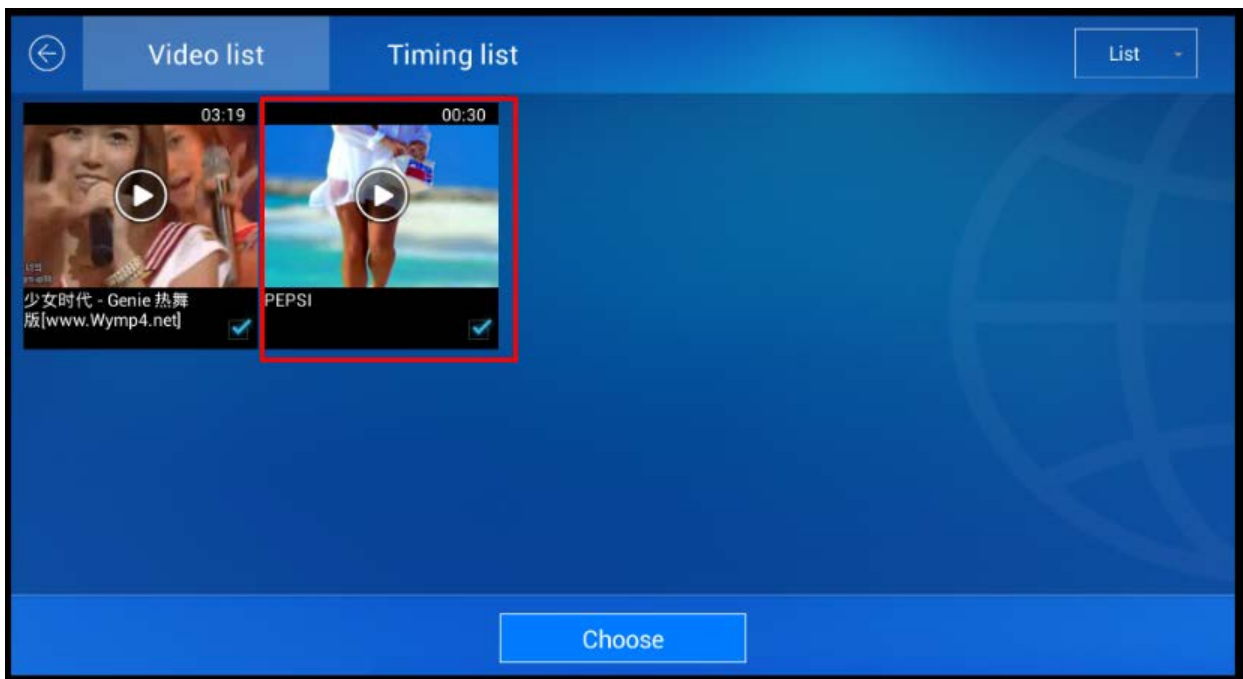


-  : **Enter the video playlist:** Click on the menu, you can enter the interface which you can add files, Click the [Choose] menu and you can go to the storage directory of the Mdea. Into the corresponding directory, check the audio, pictures, video files, and then click "OK" to add a video to this screen.and the software can read files from USB.

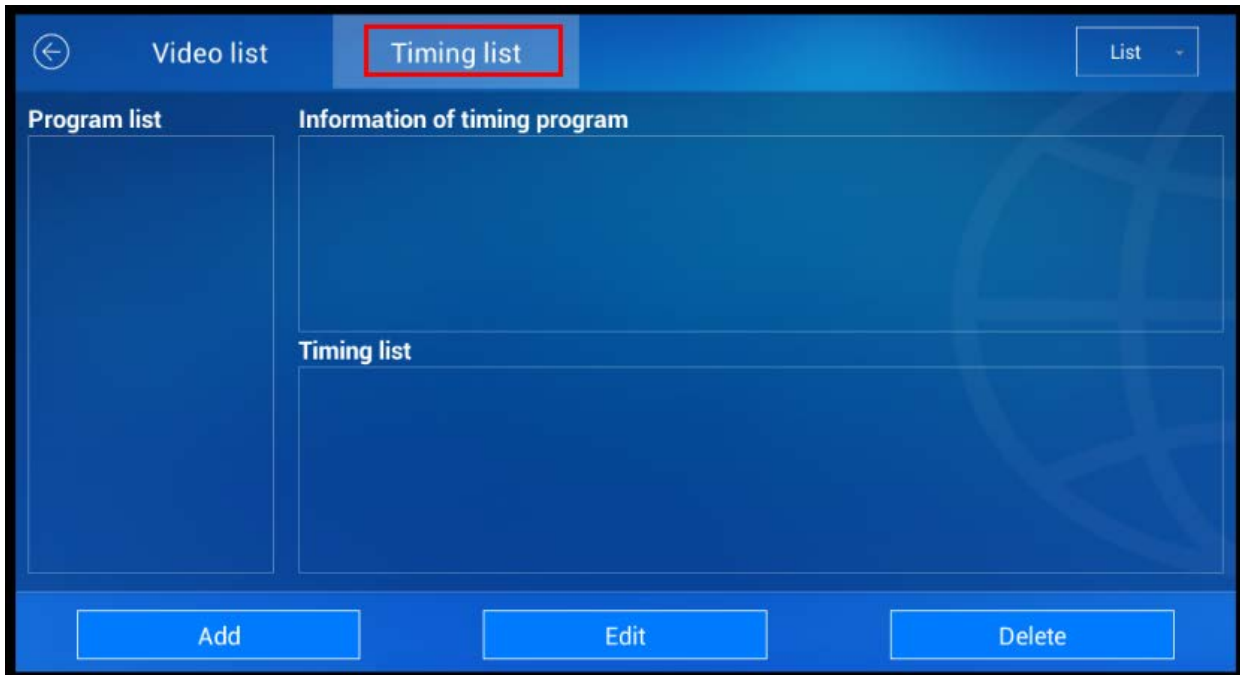




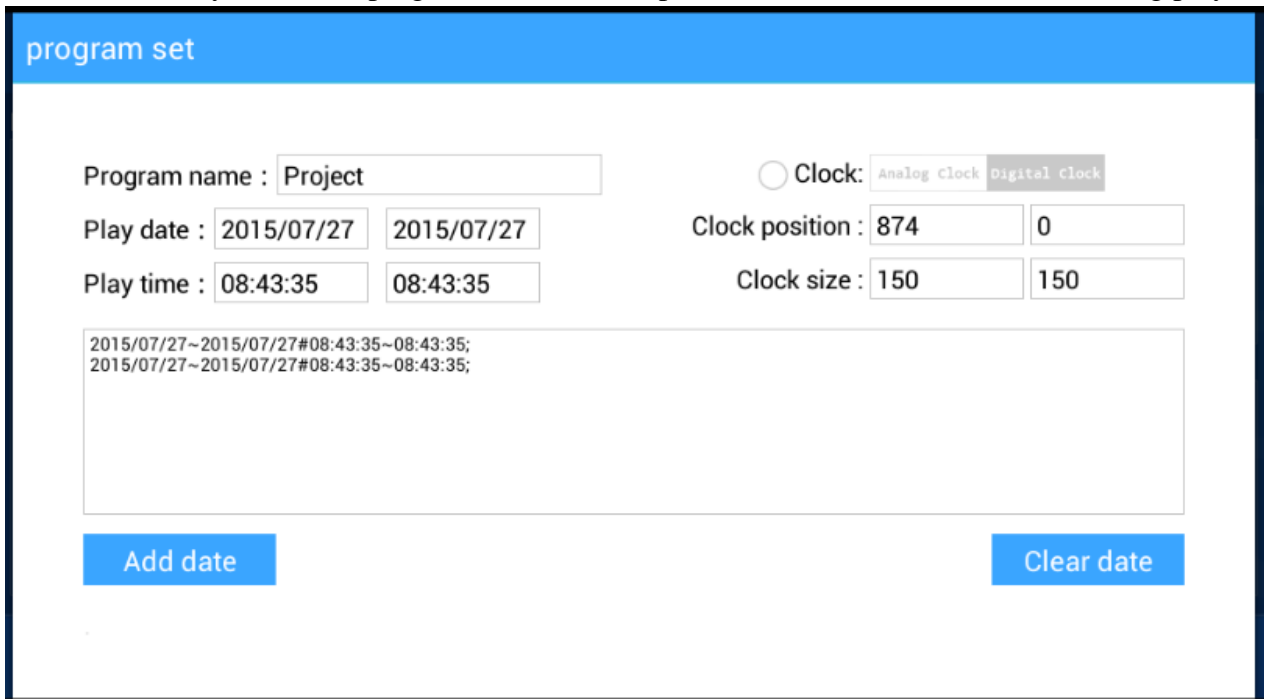
Add video to the screen displayed, check the video, and then click on the video, you can play the newly added video.



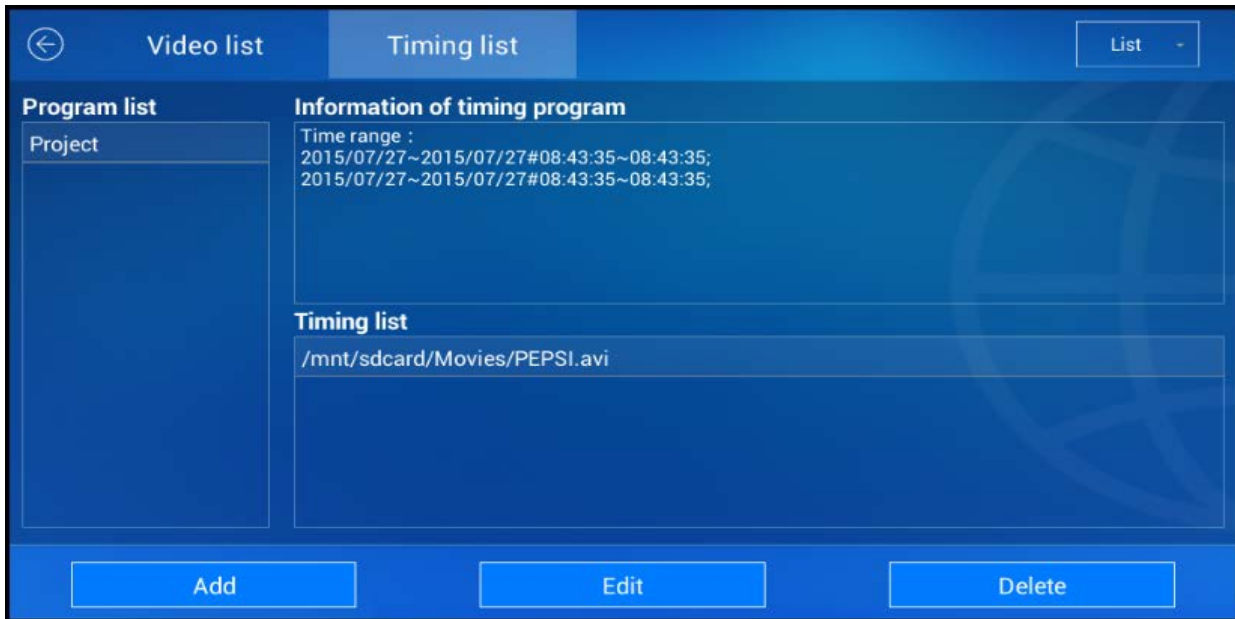
Enter timing list: playlist can be timed video playback within a set time frame.











- 1) Add a timing scheme: the interface menu settings, set after save after save the system will automatically match the program is in the time period, the case of the execution timing play



2) After completion of the timing of the program, return to regular play interface can see the program information has been added, the timing scheme can be modified.



After setting the Video list and Timing list, you can click the Back Menu on the left of the screen and enter the playback main interface.

- : Play next added to the list of files.
- : The previous added to the list of files.
- : Pause / play current file.
- : Stop playing the current file.
- : Click on the menu to enter Full Screen / Exit Full Screen.
- : You can individually adjust the volume of multiple windows.
- : Play mode switching.
- : The player can set up two windows. If there are two windows overlap, click on any one window, then click on the menu, you can select the window covering at the top of the screen.



- Click on the menu, you can playback window position, size, image switching mode and image switching interval can be set.

Window Set

Window position:

Window size:

Switching mode: The normal switching ▾

Switching interval: Second



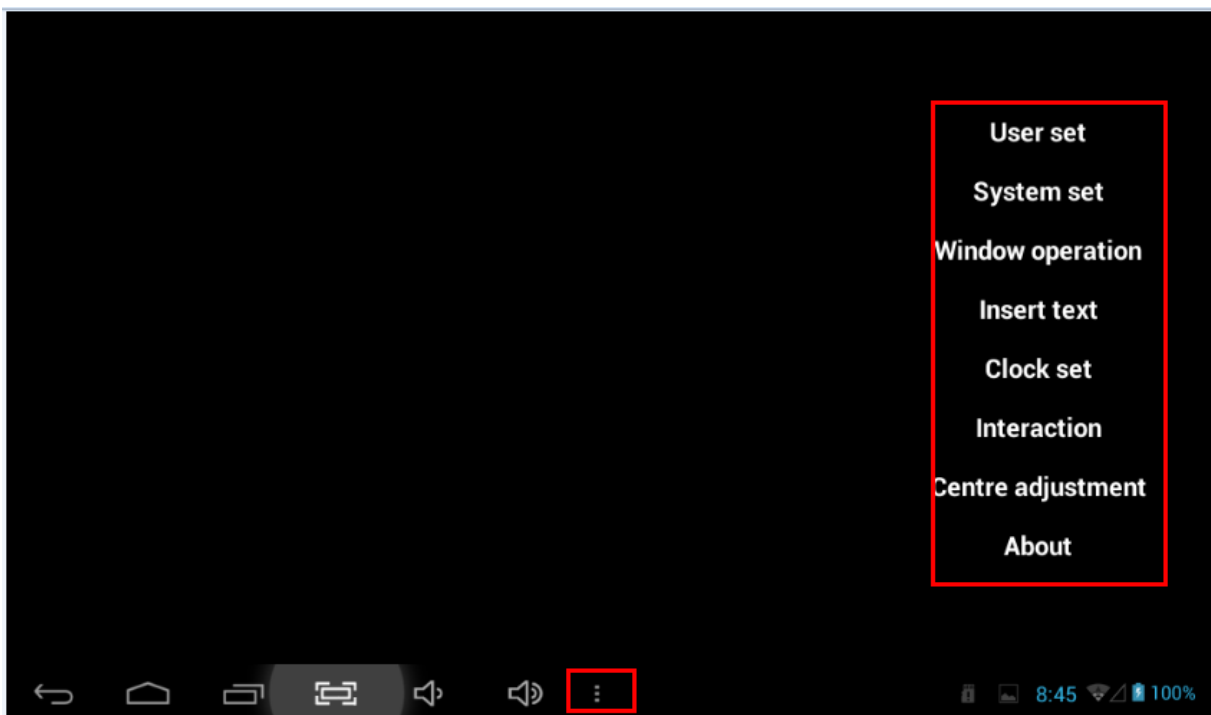
- Lock / Unlock window settings currently doing.



- Click this button will close the video playback window.

■ software setting menu

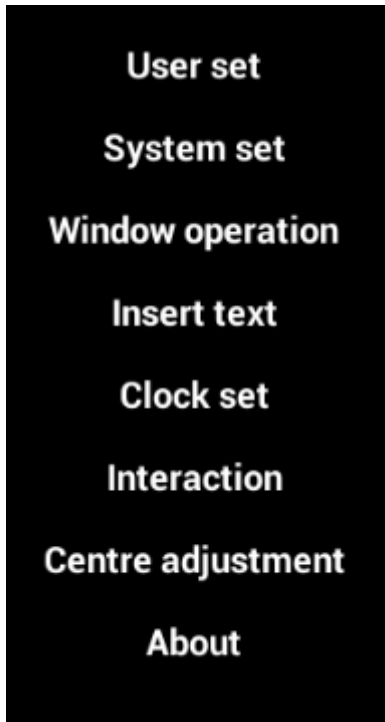
Click on the icon shown below, the setting menu will appear on the right of the screen.



<http://www.ydeachn.com/>

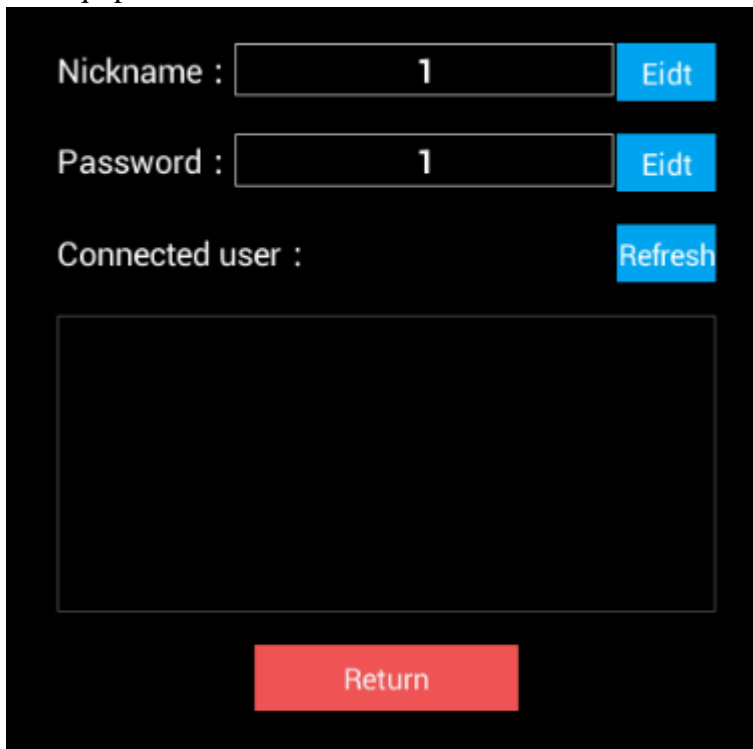
Address: Bao'an District of Shenzhen City white pine Road of Founder Technology Park A1 building 4 floor

Software setup menu as shown below.



1) User Information:

You can display the station Mdea player device name and password; the user list connected clients and equipment

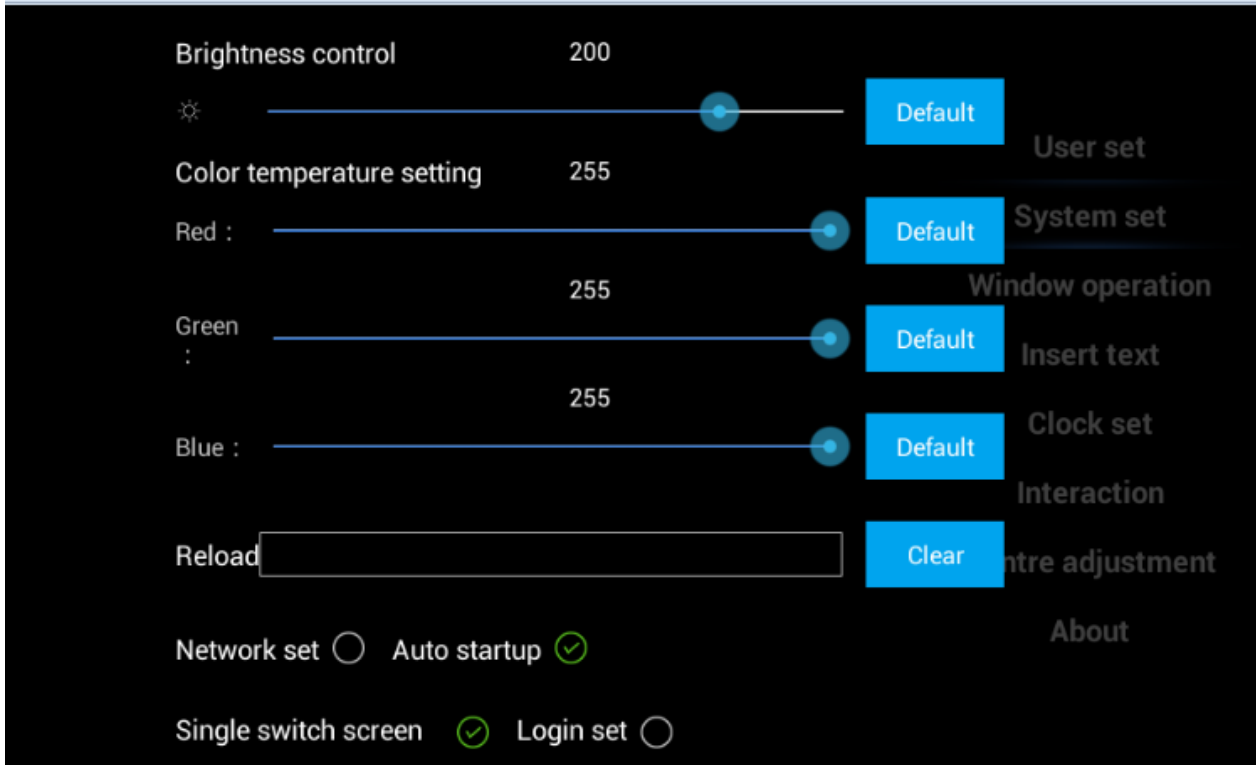


A form with a black background and white text. It contains three input fields and three buttons. The first field is labeled 'Nickname :', the second 'Password :', and the third 'Connected user :'. Each field contains the number '1'. The buttons are labeled 'Eidt', 'Eidt', and 'Refresh'. A red 'Return' button is at the bottom.

<http://www.ydeachn.com/>

Address: Bao'an District of Shenzhen City white pine Road of Founder Technology Park A1 building 4 floor

2) System Settings



- **Network Set:** when connected to a wireless network, the Mdea and the mobile phone must be connected to the same router. When use WIFI hotspot the Mdea created, the mobile phone need to connect to the WIFI hotspot.
- **Brightness Control:** You can set the brightness of the video playback window
- **Reload:** Click on the text box to select the time setting software reboot time, multi-optional
- **Auto startup:** Automatically starts the software Mdea player to boot.
- **Login set:** select whether or not to retain a number of settings just entered the time of playback software.
- **transfer path:** You can set the device to connect the client to transfer files to this path. Use the default path.

3) Add window:

Add a new player window or delete window, the player can use up to two playback window.



Window ID: Video window_1

Window position: -12 -10

Window size: 252 272

Play style: Loop playback

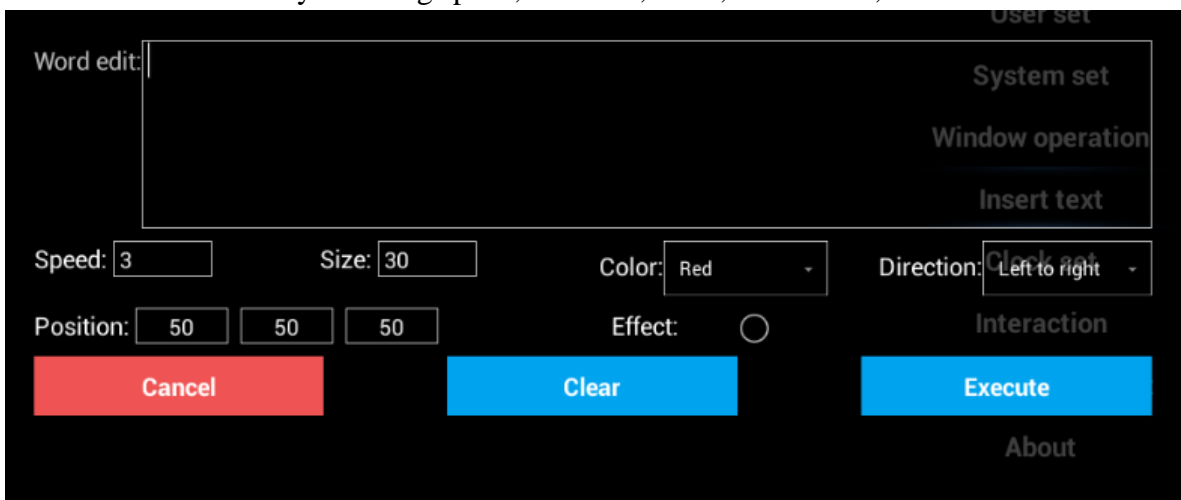
Switching mode: The normal switching

Switching interval: 3 Second

Cancel Add

4) Insert word:

You can set text overlay scrolling speed, font size, color, orientation, location and so on.



Word edit:

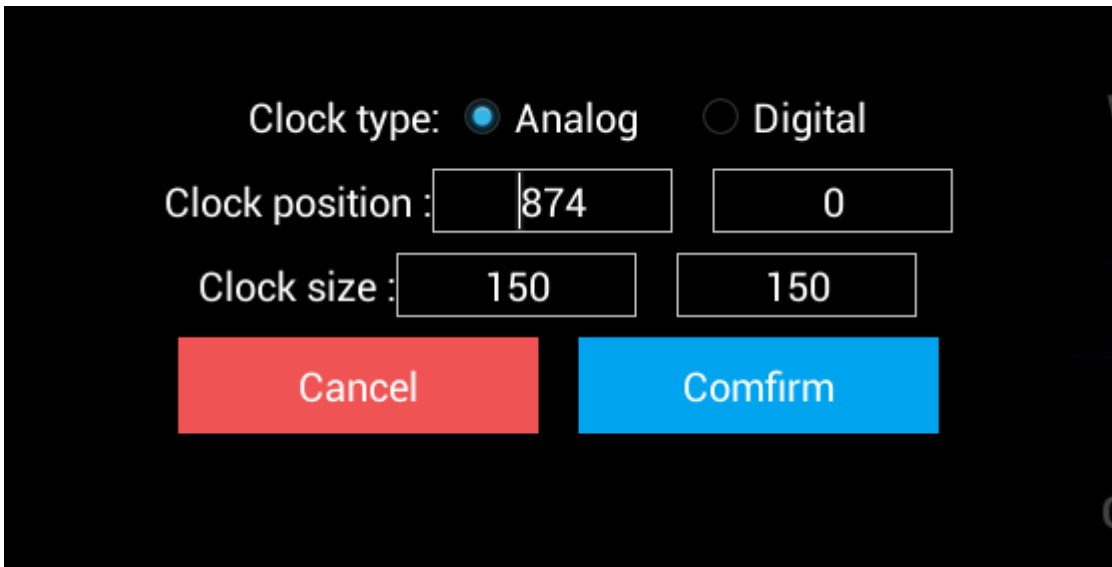
Speed: 3 Size: 30 Color: Red Direction: Left to right

Position: 50 50 50 Effect:

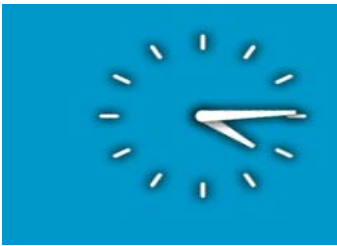
Cancel Clear Execute

5 Clock Set:

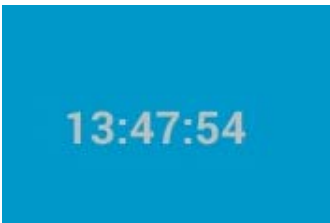
You can select the number of virtual clock and the clock, set the initial size and position



Analog:

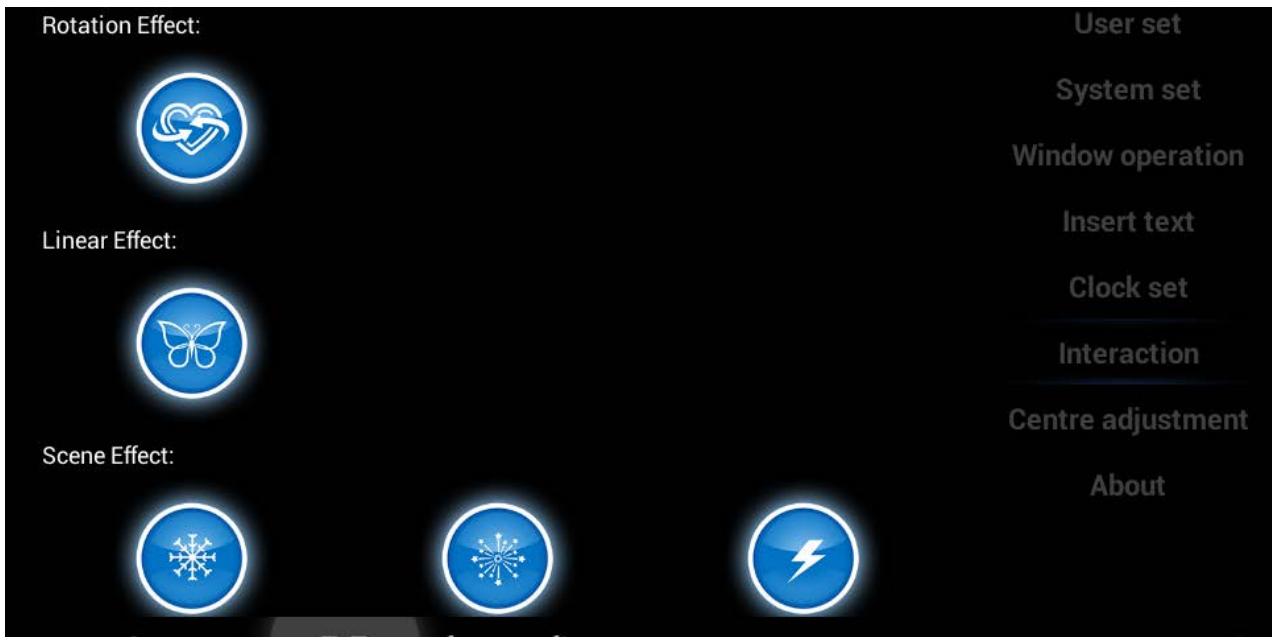


Digital:



6 Interaction:

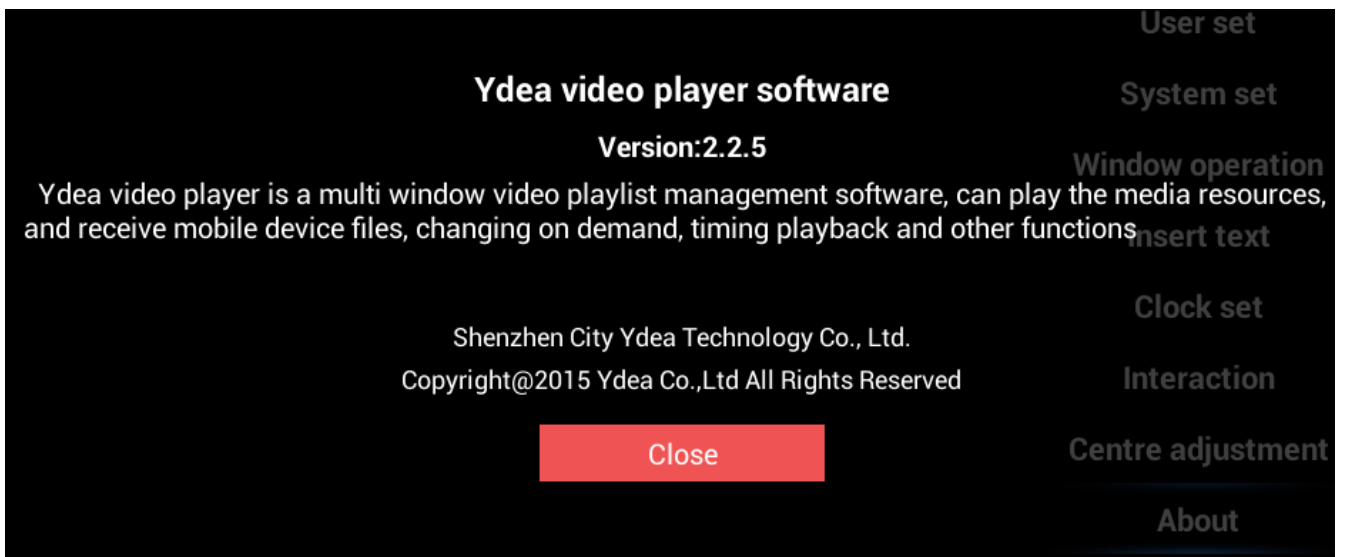
Click on the menu, then enter the interactive effect of the interface, click on the corresponding picture will be displayed in the corresponding window, click on the picture. Mainly used for mobile client interaction.



7. Centre adjustment

If there is a video window can not get and out of bounds, perform this function, all the intermediate stacked display window on the canvas.

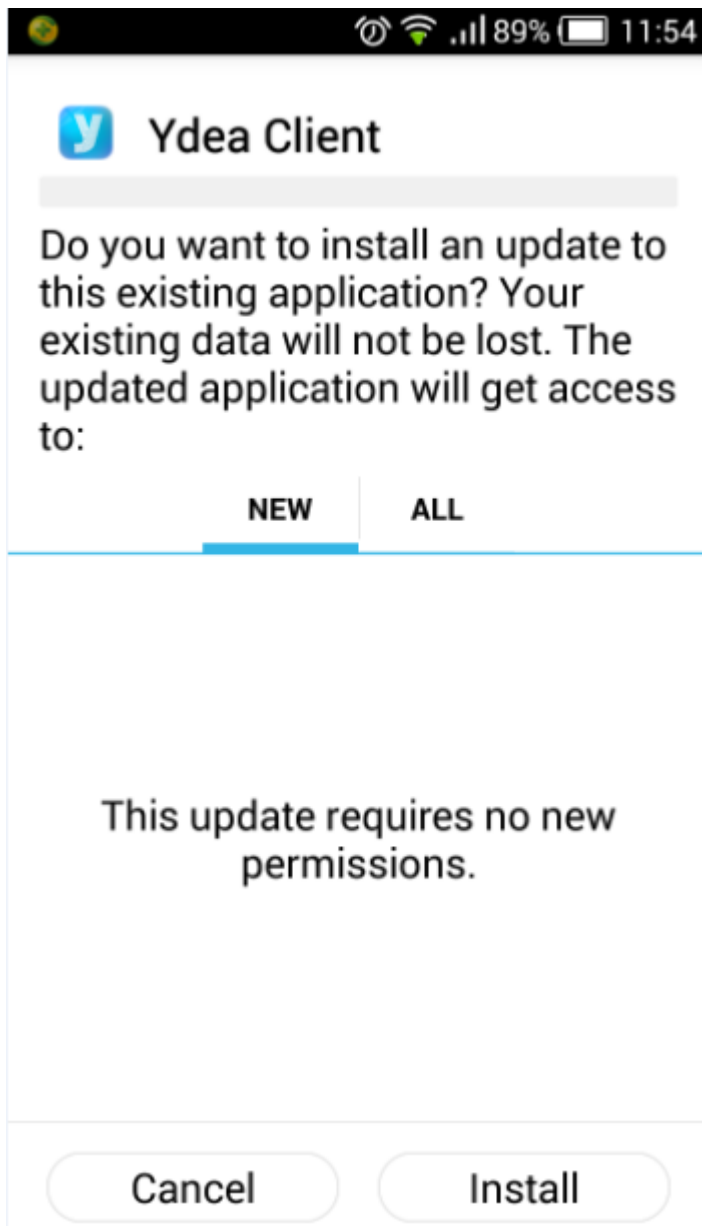
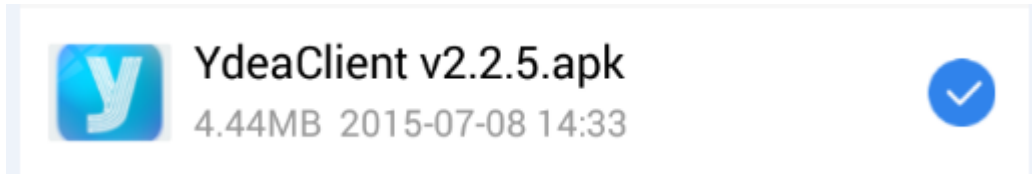
8 About



5.3 Client software

5.3.1 Software Installation

1) In the file manager, find the installation package (YdeaPlayer.apk), click on the installation package, as shown.



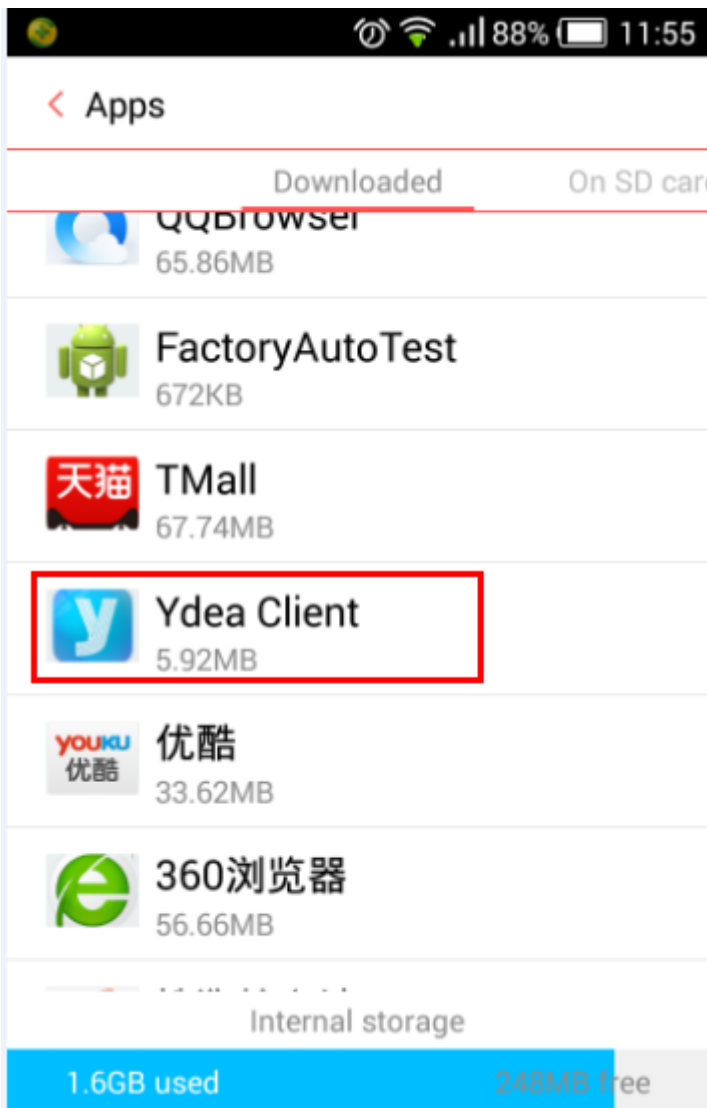
Click [install] to install software.

<http://www.ydeachn.com/>

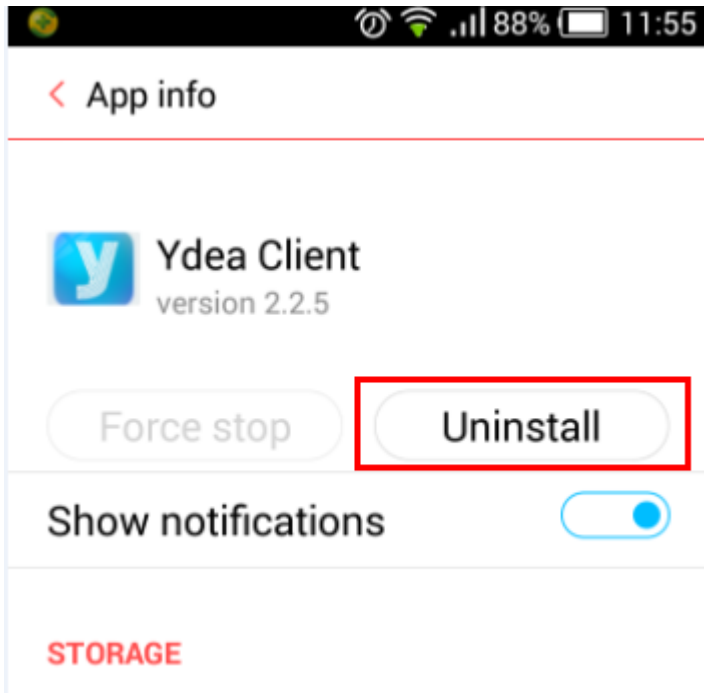
Address: Bao'an District of Shenzhen City white pine Road of Founder Technology Park A1 building 4 floor

5.3.2 Software Uninstall

Click [System Settings] - [Manage apps], click YdeaLED icon,



Click[Uninstall]button.

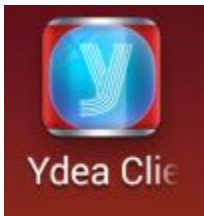


5.3.3 Software Configuration and Description

1 Login

Before landing, you need to ensure both connected to the same WIFI. And you can use a router to create a WIFI or WIFI hotspot player, but need Ydea studio software and mobile phone connected at the same WIFI.

1) After installing the apk, click the desktop icon into the software.

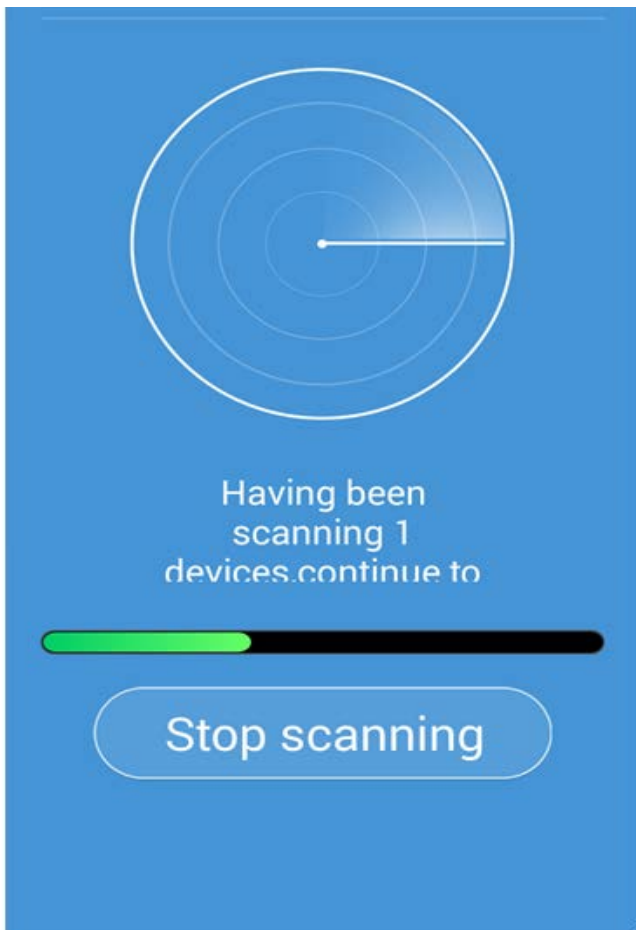


2 Login set:

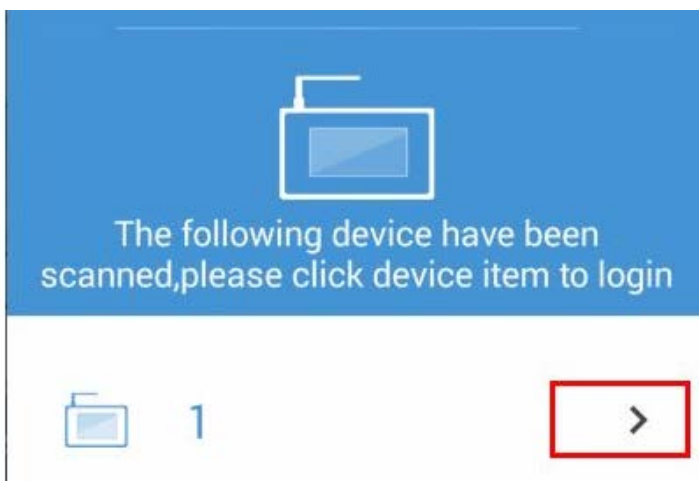
1) Before landing must first set the login nickname (default is Default). In the [User information] of the Ydea studio software, it is possible to view the name of the mobile client.



2) After set the client name, click [Scanning device]. It will enter the following interface. If you are using a router to connect to WIFI, you can use multiple phones to control more than one player. If you are using the Mdea WIFI hotspot to connect, only use multiple phones to control a player.



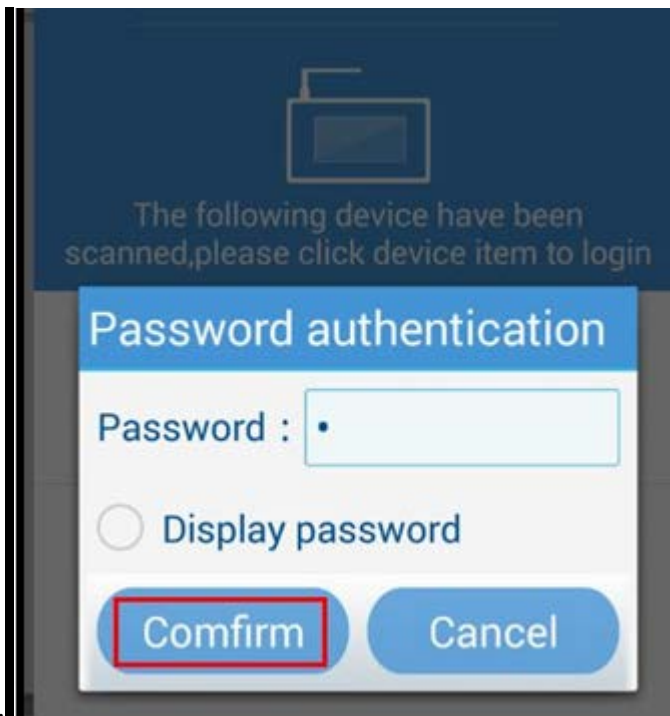
3) After the scan is complete, the device will enter the following interface. Click on the menu as shown.



4) Then you need to enter a password. This password is set in the first step in YdeaStudio. You can also view it in [User Information] of Ydeastudio.

<http://www.ydeachn.com/>

Address: Bao'an District of Shenzhen City white pine Road of Founder Technology Park A1 building 4 floor



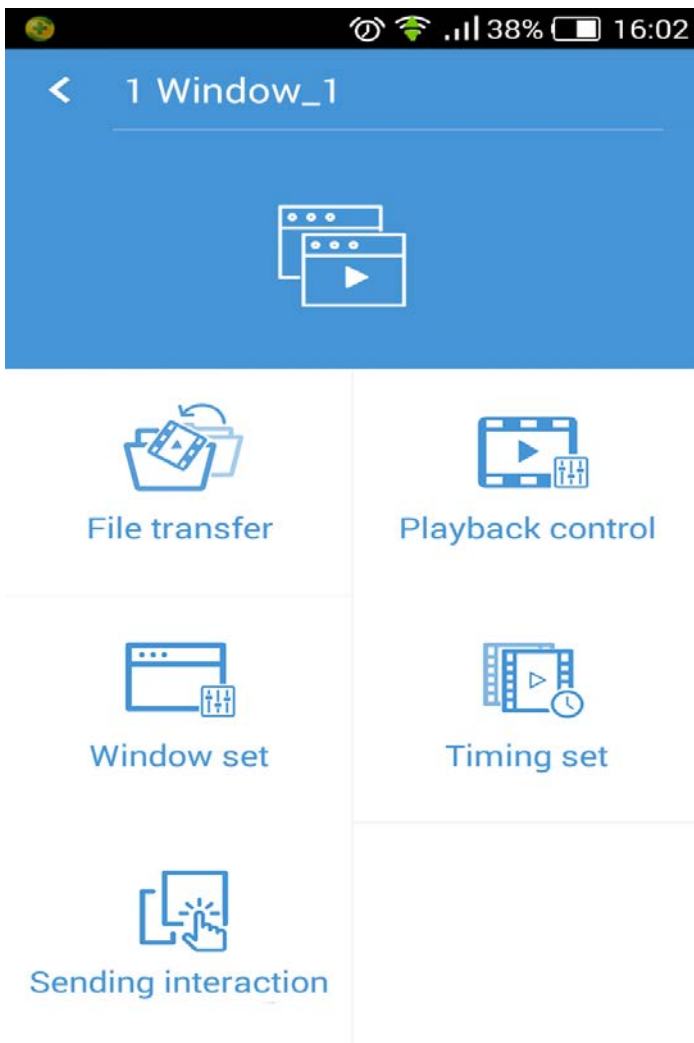
5) After the password is entered correctly, enter the following interface. How many windows the YdeaStudio have, the corresponding window will pop up at this interface. Up to two windows. Click on the appropriate window, the window will be setted in the YdeaStudio.



6) If you enter the window_1, will appear the following five sub-menu.

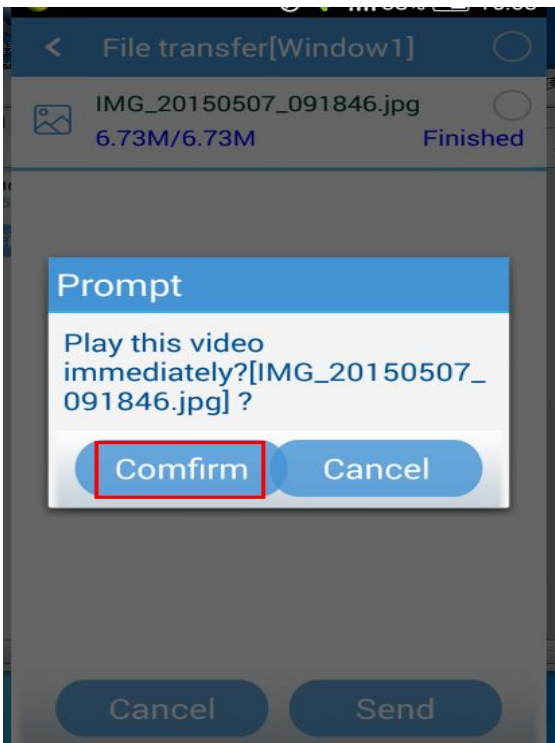
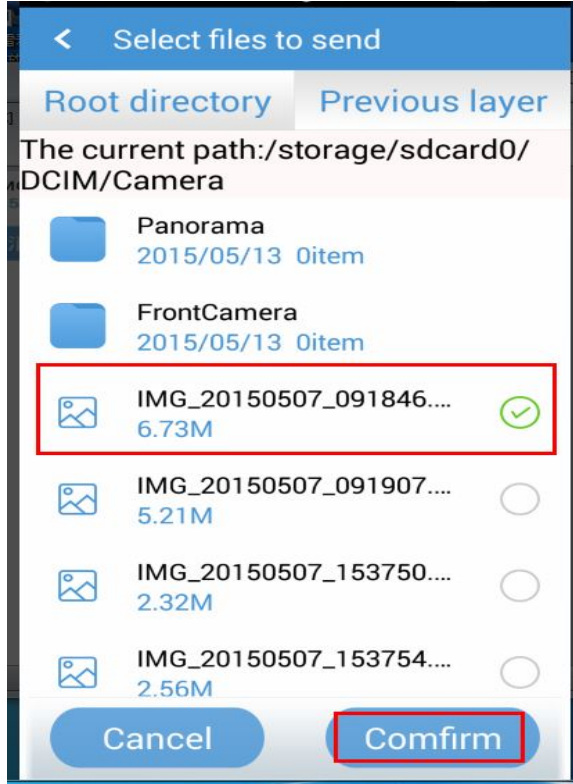
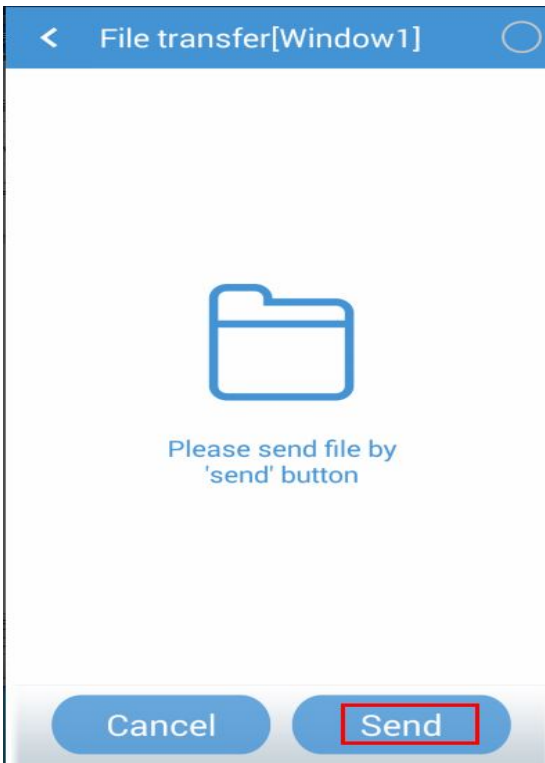
<http://www.ydeachn.com/>

Address: Bao'an District of Shenzhen City white pine Road of Founder Technology Park A1 building 4 floor



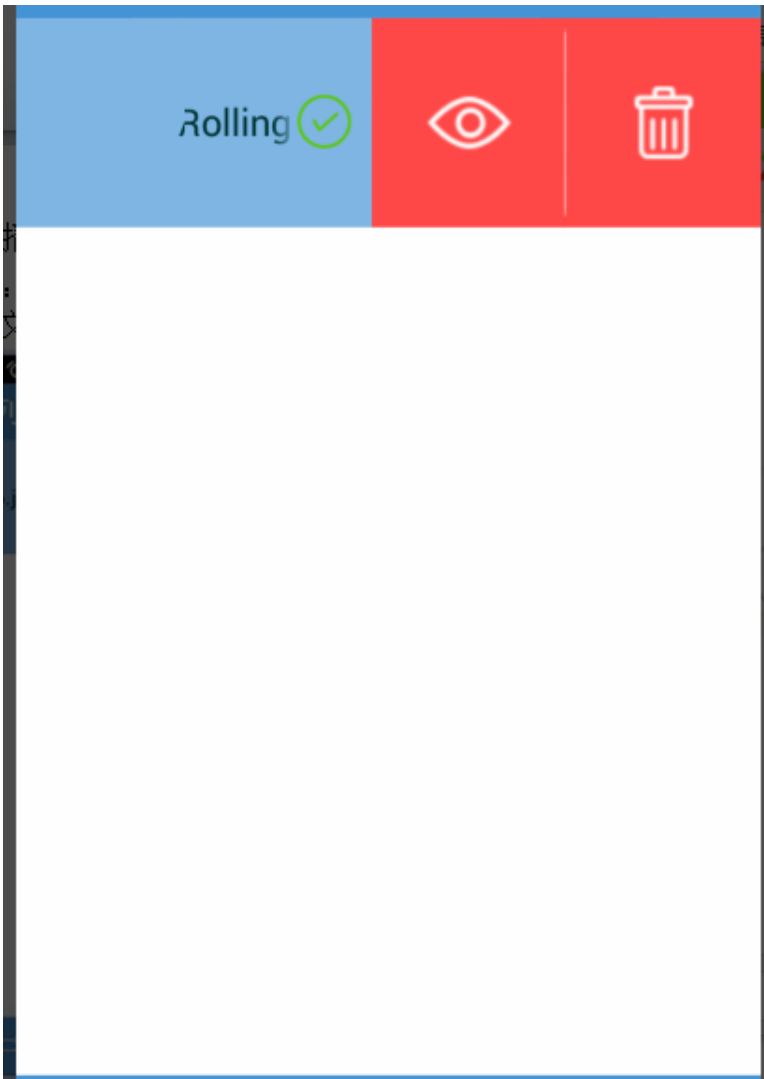
■ video file transfer:





You can transfer files from the phone side to the side. First select [Send], enter the phone directory, check the file to be transferred, it will be automatically uploaded. After the upload is complete, choose whether to play immediately or not.





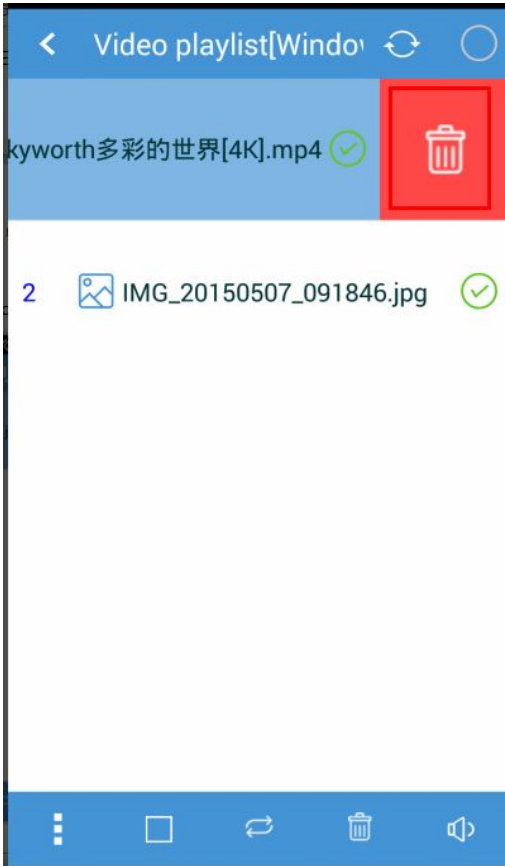
■ Playback control:





Return to the main interface, then click [Playback control]. It will enter into the following interface





- : Click on the menu, it will search for all multimedia files the Mdea existence. Including video and pictures and so on.
- : Play previous file.
- : Play the current file.
- : Pause the current file.

- : Play next file
- : Go to the next control menu.

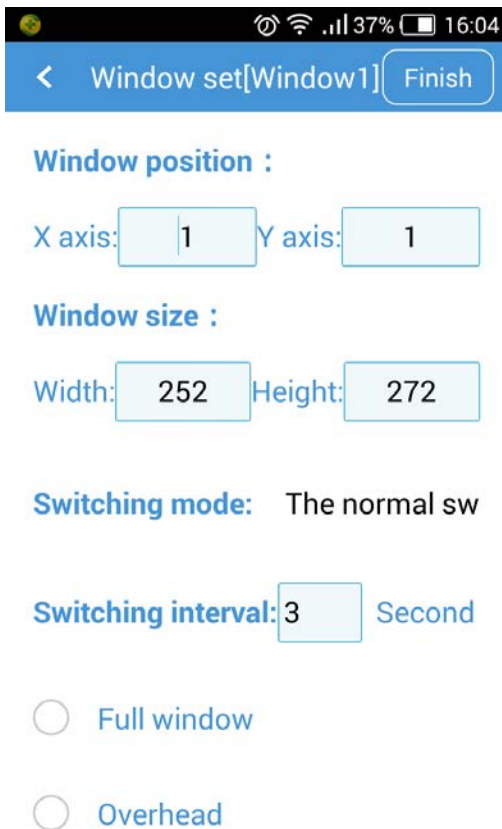


- : Go to the previous control menu.
- : Stop playing the current file.
- : Change the file-repeat fashion.
- : Clear list

-  : Changing sound playback window size.
-  : IF you ticked, it will be added to the playlist.
- **delete a single file:** Slide single file to the left, it will appear as shown in the delete menu, click to delete a single file.

■ Window set:

Return to the main menu, enter the [window set] interface, you can set the window's location,size and so on.



Window position :

X axis: Y axis:

Window size :

Width: Height:

Switching mode: The normal sw

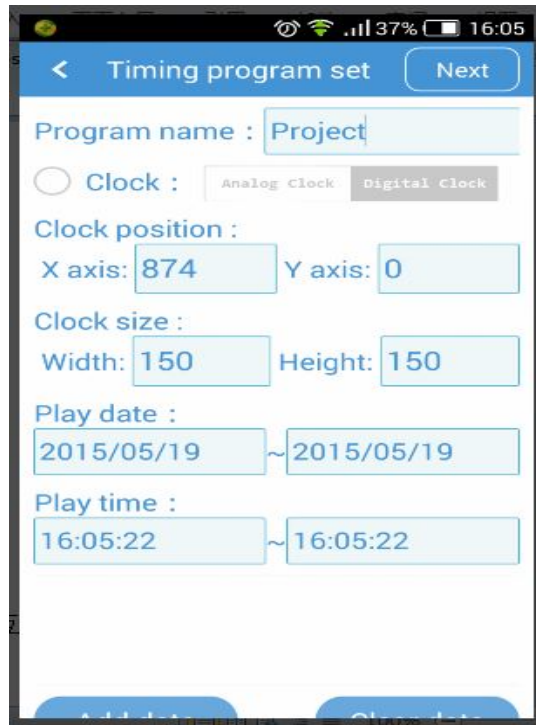
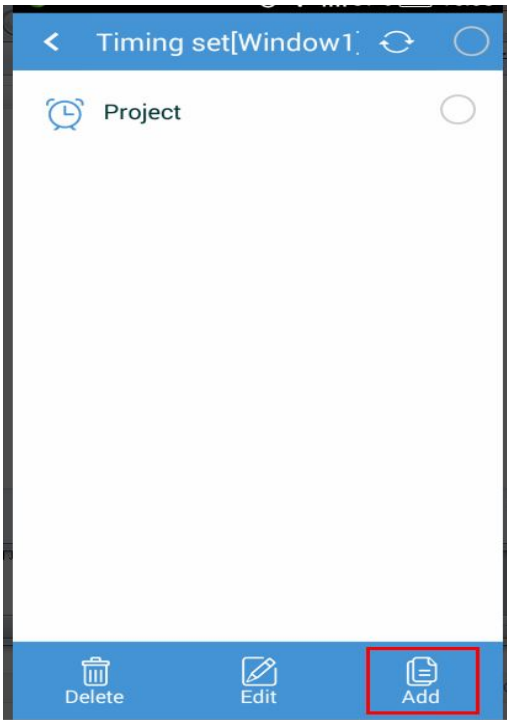
Switching interval: Second

Full window

Overhead

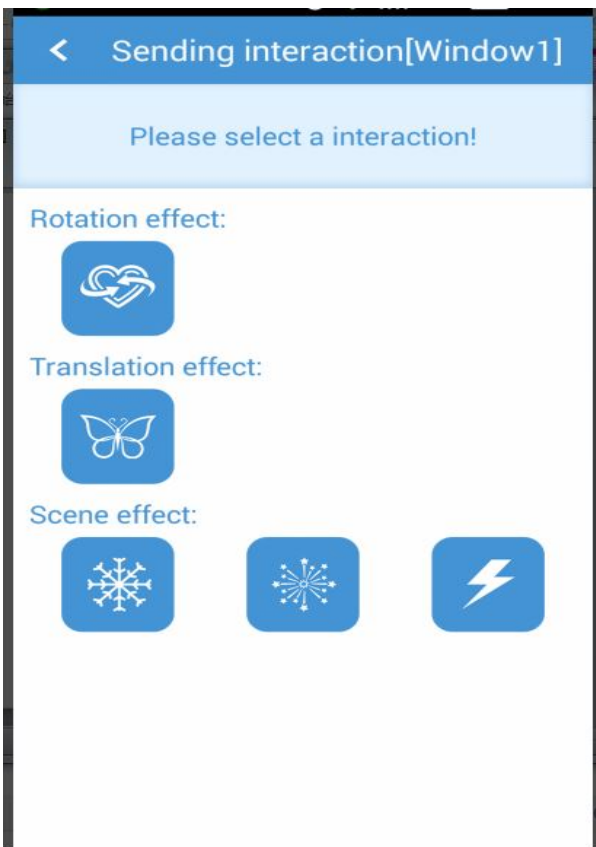
■ Timing set:

Return to the main menu, enter the [Time set] interface, you can set the timer.



■ Sending interaction:

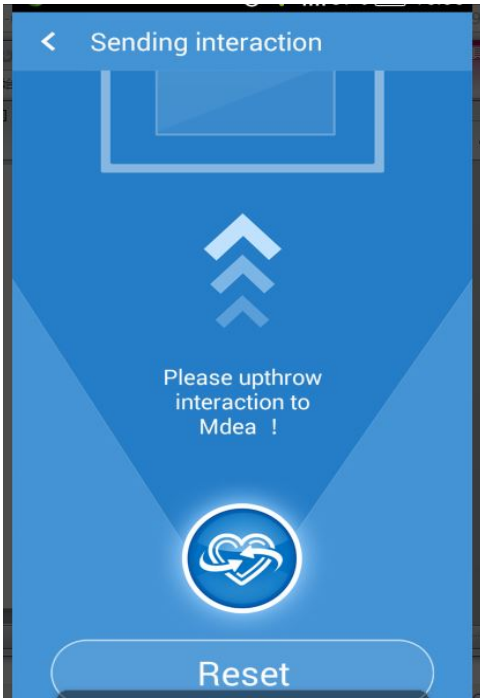
Return to the main menu, enter the [Sending interaction] interface. You can use the phone to Sending interaction.



<http://www.ydeachn.com/>

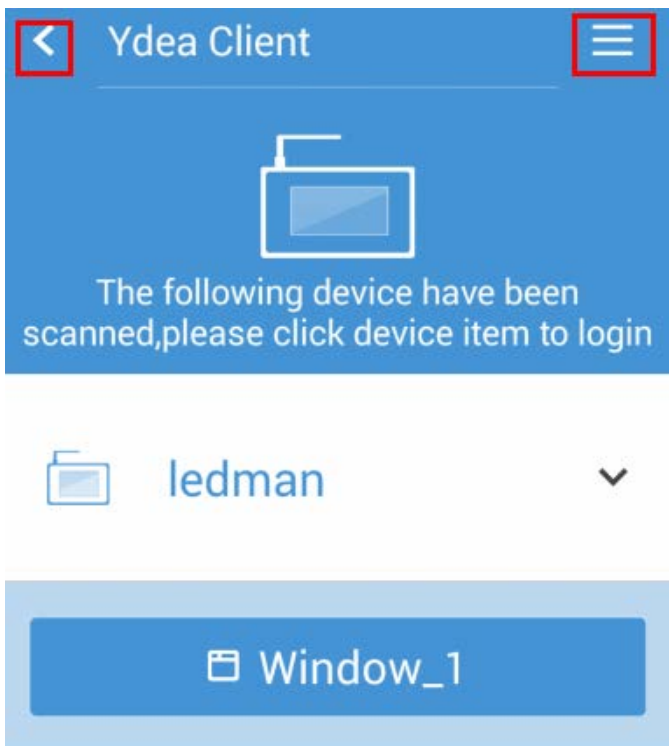
Address: Bao'an District of Shenzhen City white pine Road of Founder Technology Park A1 building 4 floor

Select the corresponding picture, will enter into the following interface, then press and hold the corresponding picture, then pushed upwards.



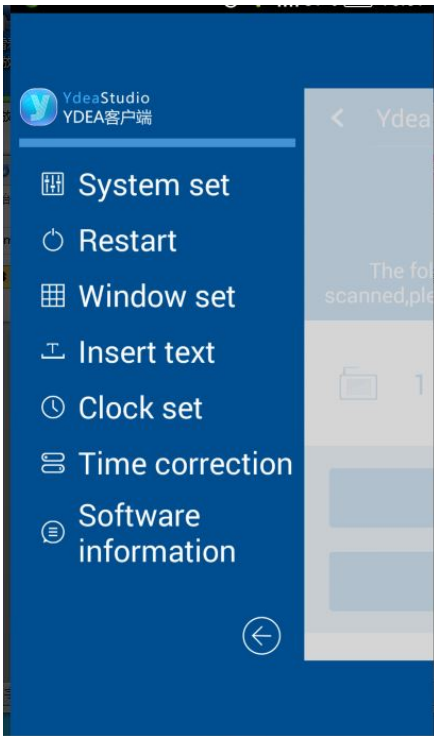
■ System Settings:

enter the main menu, click on the icon below, or click on the main menu, the system can be set up.



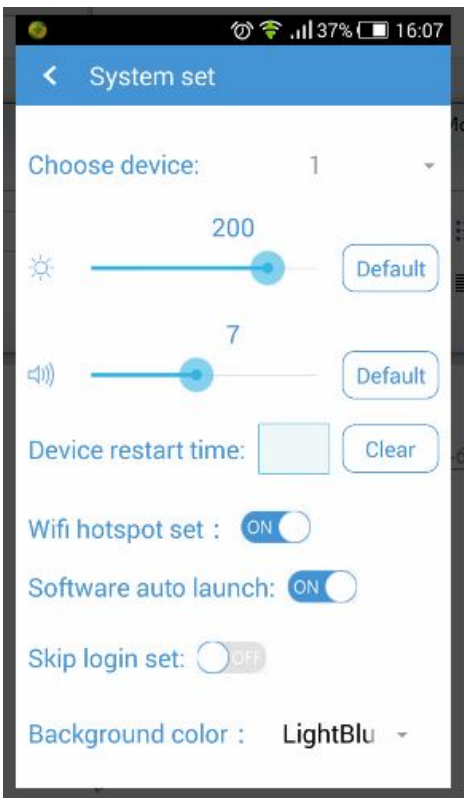
<http://www.ydeachn.com/>

Address: Bao'an District of Shenzhen City white pine Road of Founder Technology Park A1 building 4 floor



■ **System set:**

Click [System Set], there will be brightness, sound and other settings, after the setting, click [save].

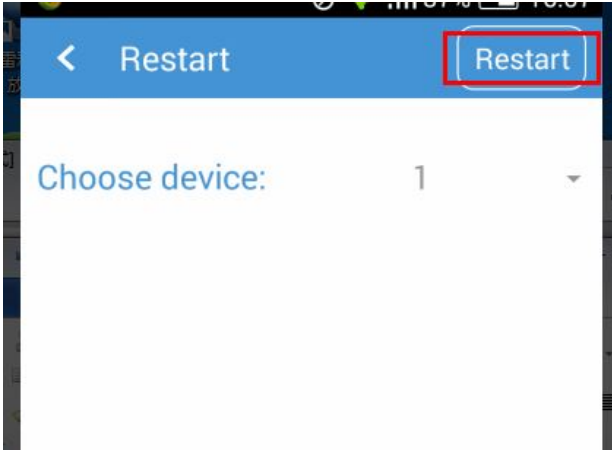


<http://www.ydeachn.com/>

Address: Bao'an District of Shenzhen City white pine Road of Founder Technology Park A1 building 4 floor

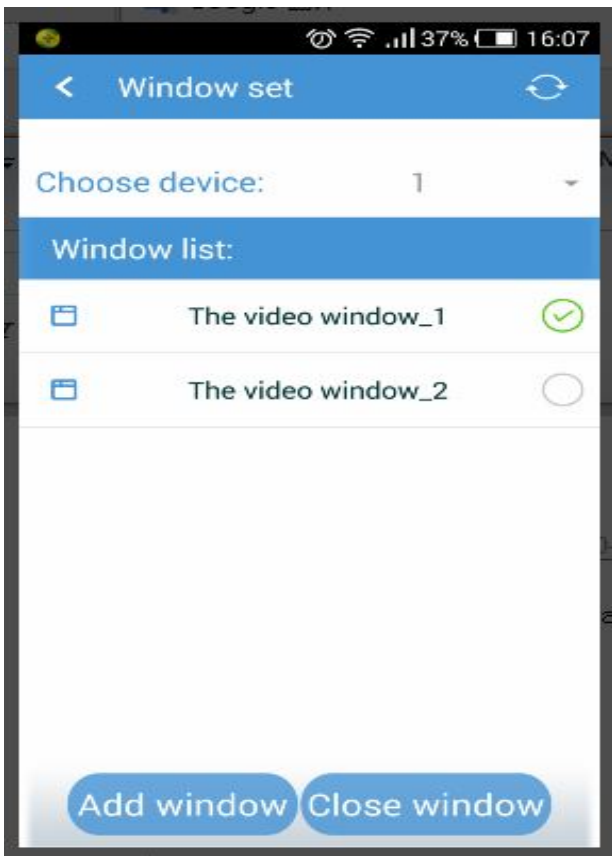
■ Restart:

Click [Restart] to enter the following interface, then click [restart] menu the corresponding Mdea can be restarted.



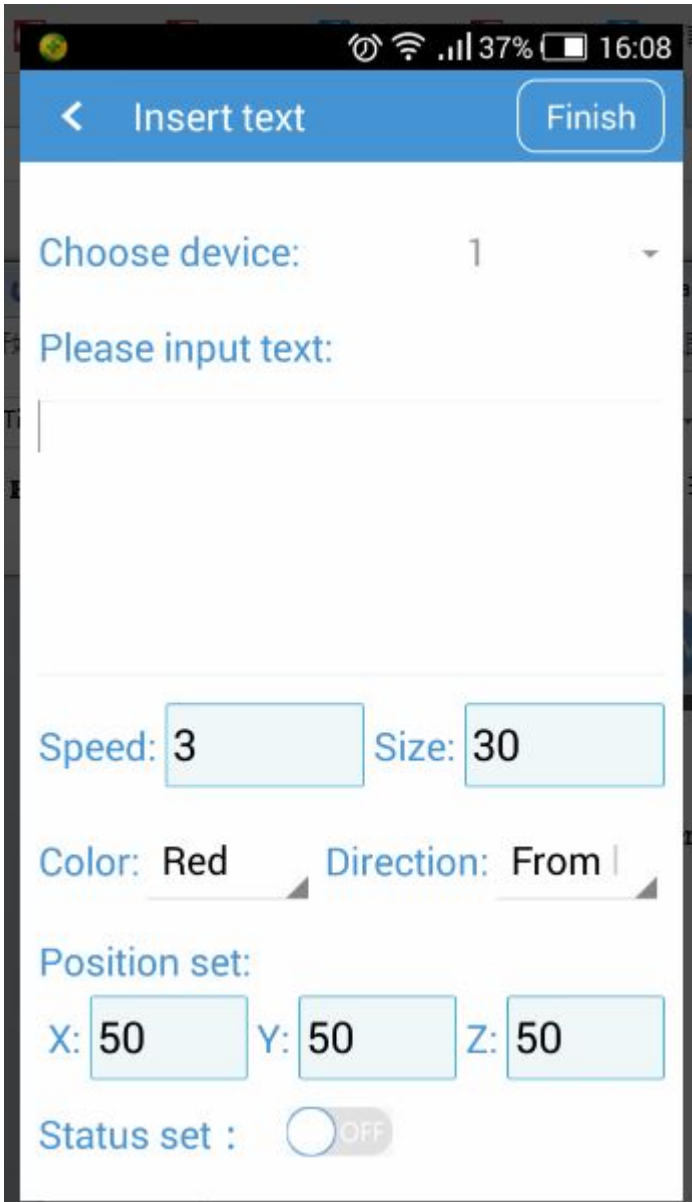
■ Window set:

Click on the menu, you can manage the Mdea' s already existing window. Specifically as shown.



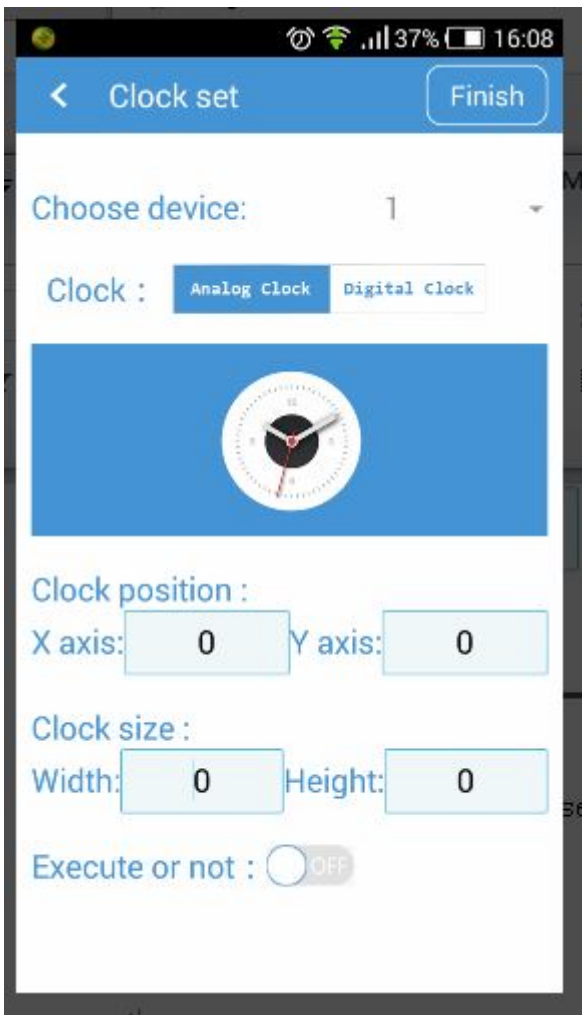
■ **Insert text:**

Click on the menu, you can enter [Insert text] interface, spots the desired character in the window.



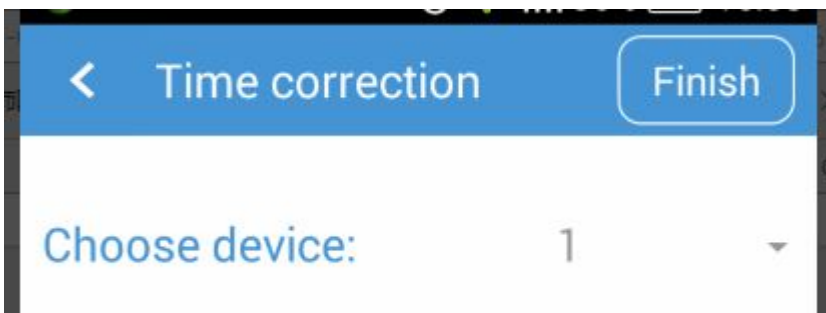
■ **Clock set:**

Click on the menu, you can set the clock.



■ **Time correction:**

Click on the menu, you can correct the system time . But the Mdea does not built-in battery. So corrected time will change after a power outage.

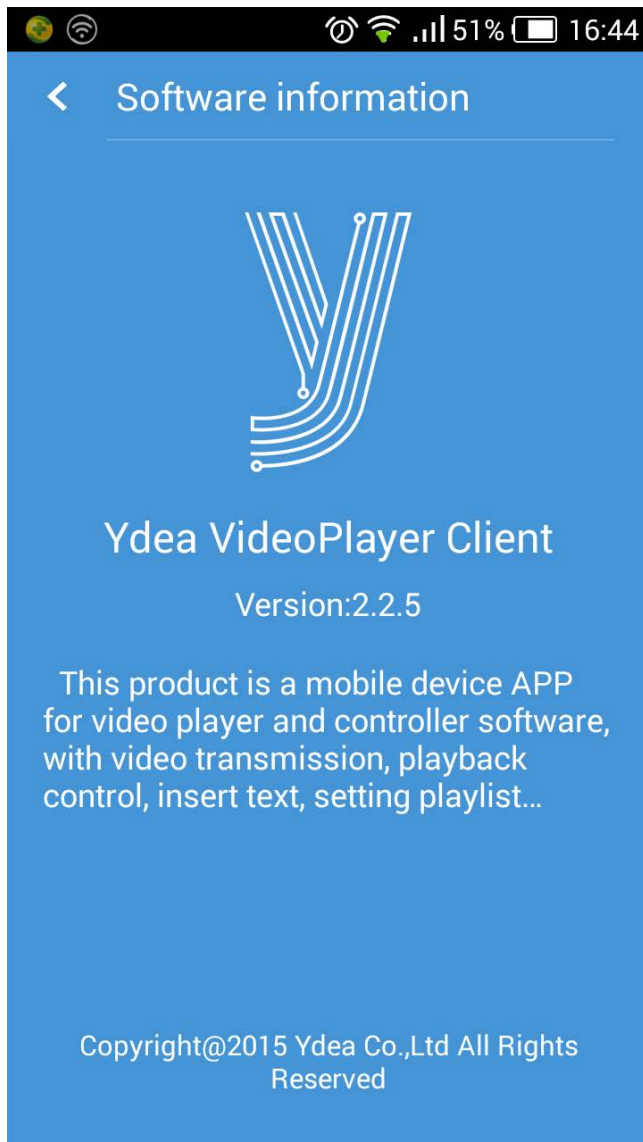


■ **Software information:**

Click on the menu, you can view the software version.

<http://www.ydeachn.com/>

Address: Bao'an District of Shenzhen City white pine Road of Founder Technology Park A1 building 4 floor



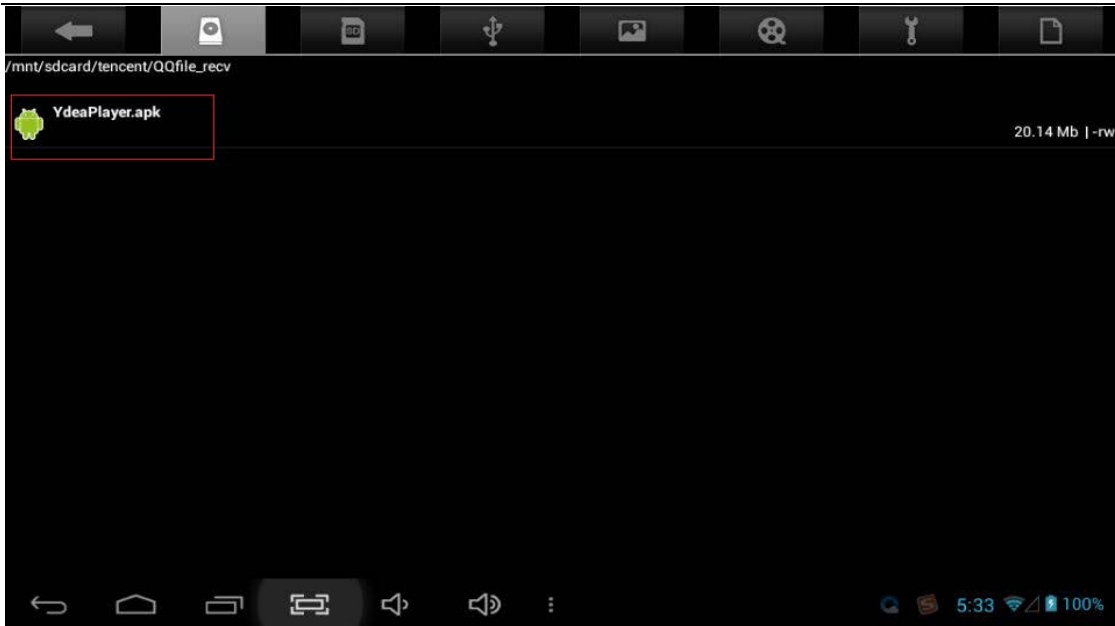
5.4 Cluster Software

5.4.1 Software Installation

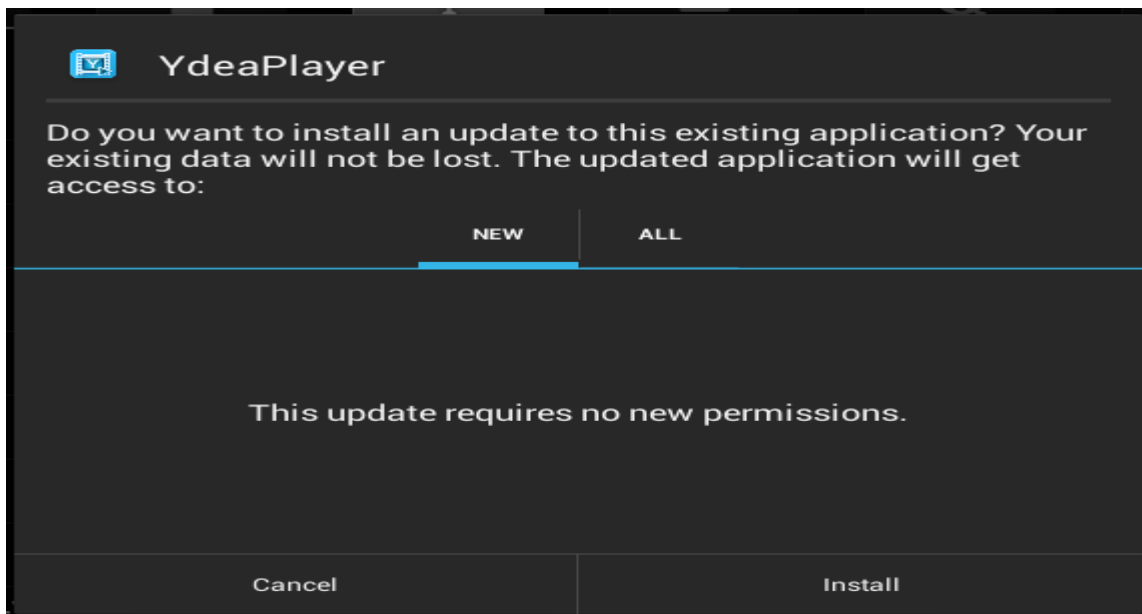
1) In the file manager, find the installation package (YdeaPlayer.apk), click on the installation package, as shown.

<http://www.ydeachn.com/>

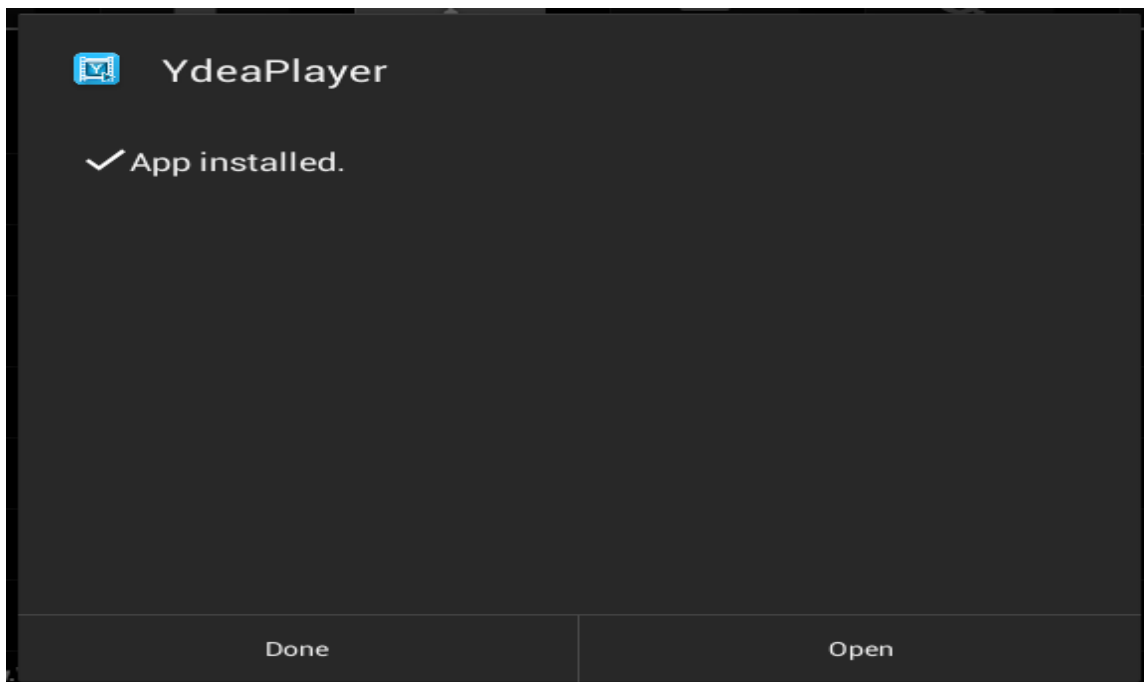
Address: Bao'an District of Shenzhen City white pine Road of Founder Technology Park A1 building 4 floor



2) At the prompt screen, click [install] button.

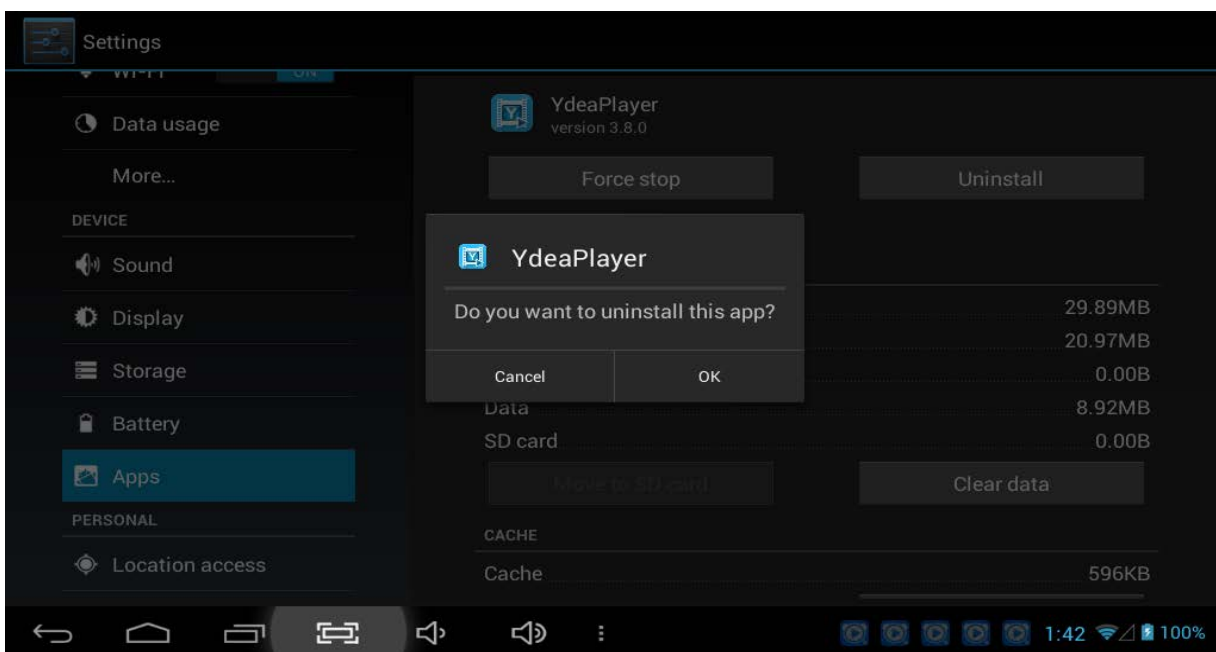


3) After the installation is complete, the prompt interface, click [Finish] button.



5.4.2 Software Uninstall

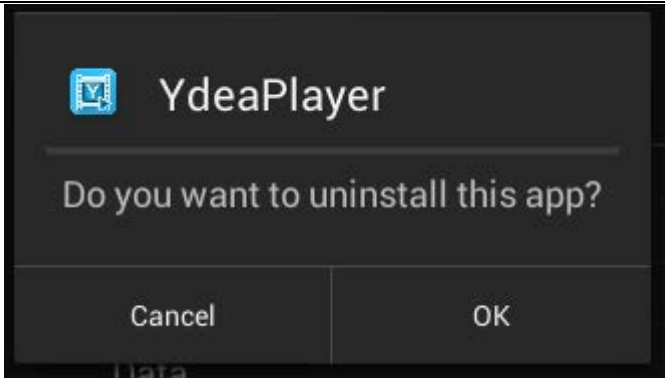
1) Click [System Settings] - [Apps], click YdeaLED icon, click [Uninstall] button.



2) On the prompt interface, click [OK] button to complete the uninstall.

<http://www.ydeachn.com/>

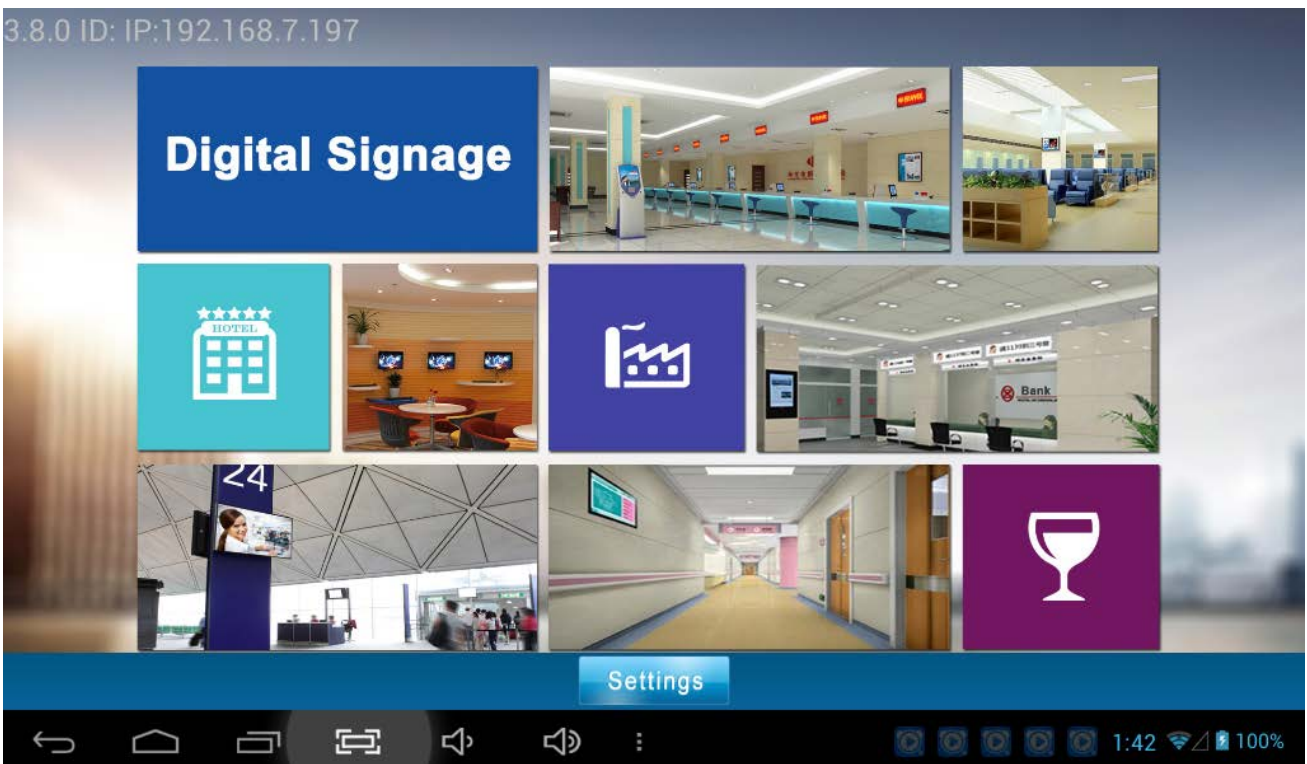
Address: Bao'an District of Shenzhen City white pine Road of Founder Technology Park A1 building 4 floor



5.4.3 Software Configuration and Description

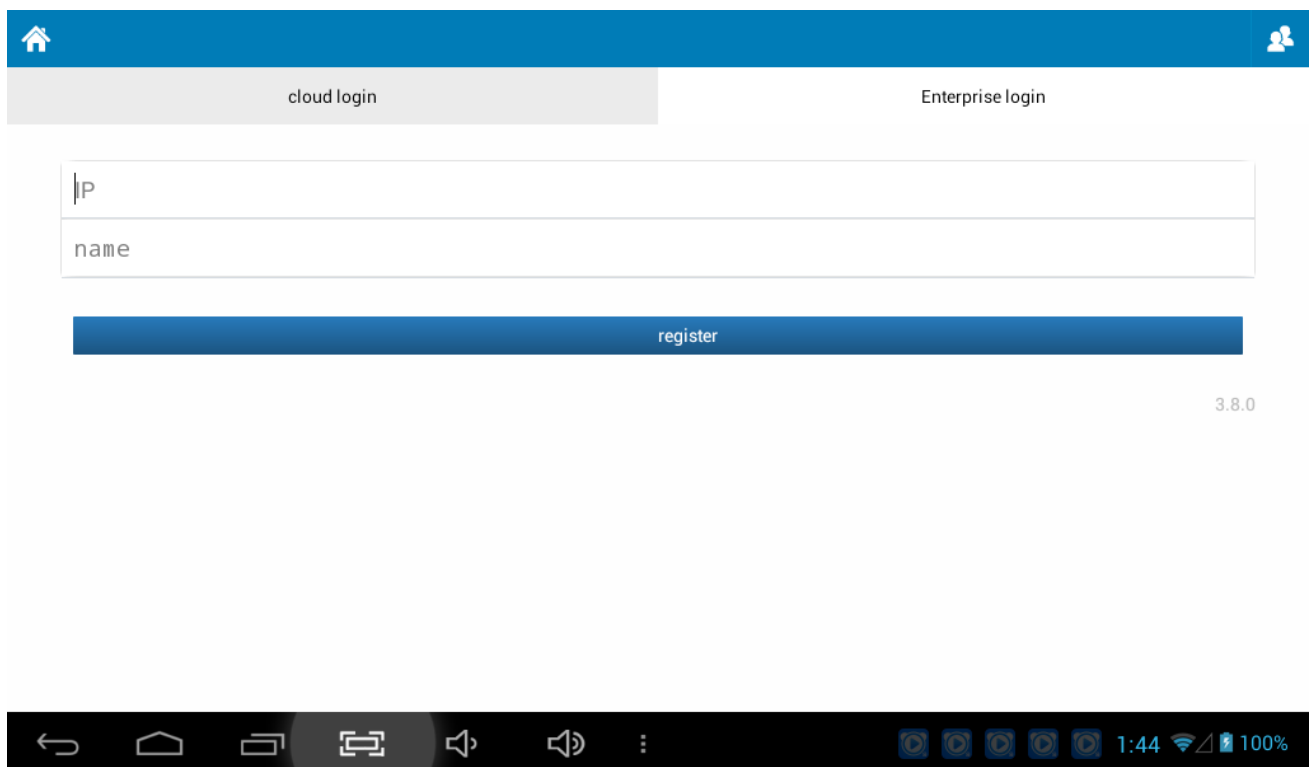
User Login:

Click YdeaPlayer icon, enter the user login screen, first log in to the software, the need for client registration. As shown below.



<http://www.ydeachn.com/>

Address: Bao'an District of Shenzhen City white pine Road of Founder Technology Park A1 building 4 floor



The screenshot shows a mobile application interface for registration. At the top, there is a blue header with a home icon on the left and a user profile icon on the right. Below the header, there are two buttons: "cloud login" and "Enterprise login". The "Enterprise login" button is selected. Below these buttons, there are two input fields: the first is labeled "IP" and the second is labeled "name". Below the input fields, there is a blue button labeled "register". In the bottom right corner of the form area, the version number "3.8.0" is displayed. At the bottom of the screen, there is a black navigation bar with various icons and a status bar showing the time as 1:44, signal strength, Wi-Fi, and 100% battery.

Login steps:

- 1 After one enters the main interface, click "**settings**" option.
- 2 Select the **Enterprise logon** option;
- 3 Enter the **IP** address of the server computer (for example: 192.168.1.144), the client and server must be connected to the same router.
- 4 Enter player terminal identifier **name** (eg: sa);
- 5 Click the **register** button. After successful registration, go to the client home.

Note: If the display registration fails, check the IP address filled in correctly, DS service on the server is turned on. When the software to communicate with the server, the server's firewall must be closed.